

Danville, Kentucky

Boyle County

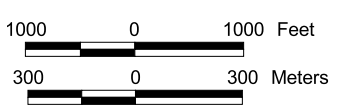
Site 021-005

**Constitution Square
State Historic Site**

Norfolk Southern-- Site 021-005 200.0 Acres/81.0 Hectares

LOCATION: Within southwestern city limits of Danville
ZONING: Industrial Business District
HIGHWAY ACCESS: Martha Layne Collins Blue Grass Parkway
 25.6 miles north of site via four-lane US 127
COMMERCIAL AIR ACCESS: Blue Grass Airport (Lexington, KY)
 Distance: 42 miles northeast of Danville
RAIL: †Norfolk Southern Railway bisects the site
WATER: Danville City Water Works
 Size Line: 12-inch line serves the site; 12-inch line along
 US 127/150 Bypass
SEWER: Danville City Sewer
 Size Line: 12-inch gravity line serves the site; 15-inch
 gravity line serves the site
NATURAL GAS: Atmos Energy Corporation
 Size Line: 4-inch line serves the site
ELECTRICITY: Kentucky Utilities (a PPL company) ;
 Inter-County Energy Cooperative
BROADBAND (Type:Service): Cable: Time Warner Cable; DSL,
 Wireless: AT&T; Wireless: KyWiMAX
FLOOD DATA: Portions of site are within flood plain
OWNERSHIP: Private
SCHOOL DISTRICT: Boyle County Schools
PRICE PER ACRE: Tract 01 \$17,000; Tract 02 \$17,000; Tract
 03 \$25,000

- ◆ Available Building
- Existing Industry
- 🚒 Fire Station
- ▲ Point of Interest
- △ Child Care
- Gas Line
- US Highway
- State Road
- Local Road
- Paved
- Unpaved
- Rail
- Water Tank
- ⋯ Water Line
- Sewer Line
- Gas Line
- Municipal Boundary
- ▭ 100 Year Flood Zone
- Tract Status
- ▭ Occupied
- ▭ Vacant
- ▭ Vacant-building
- ▭ Other
- ▭ Area of Interest



Danville, Kentucky

Boyle County

