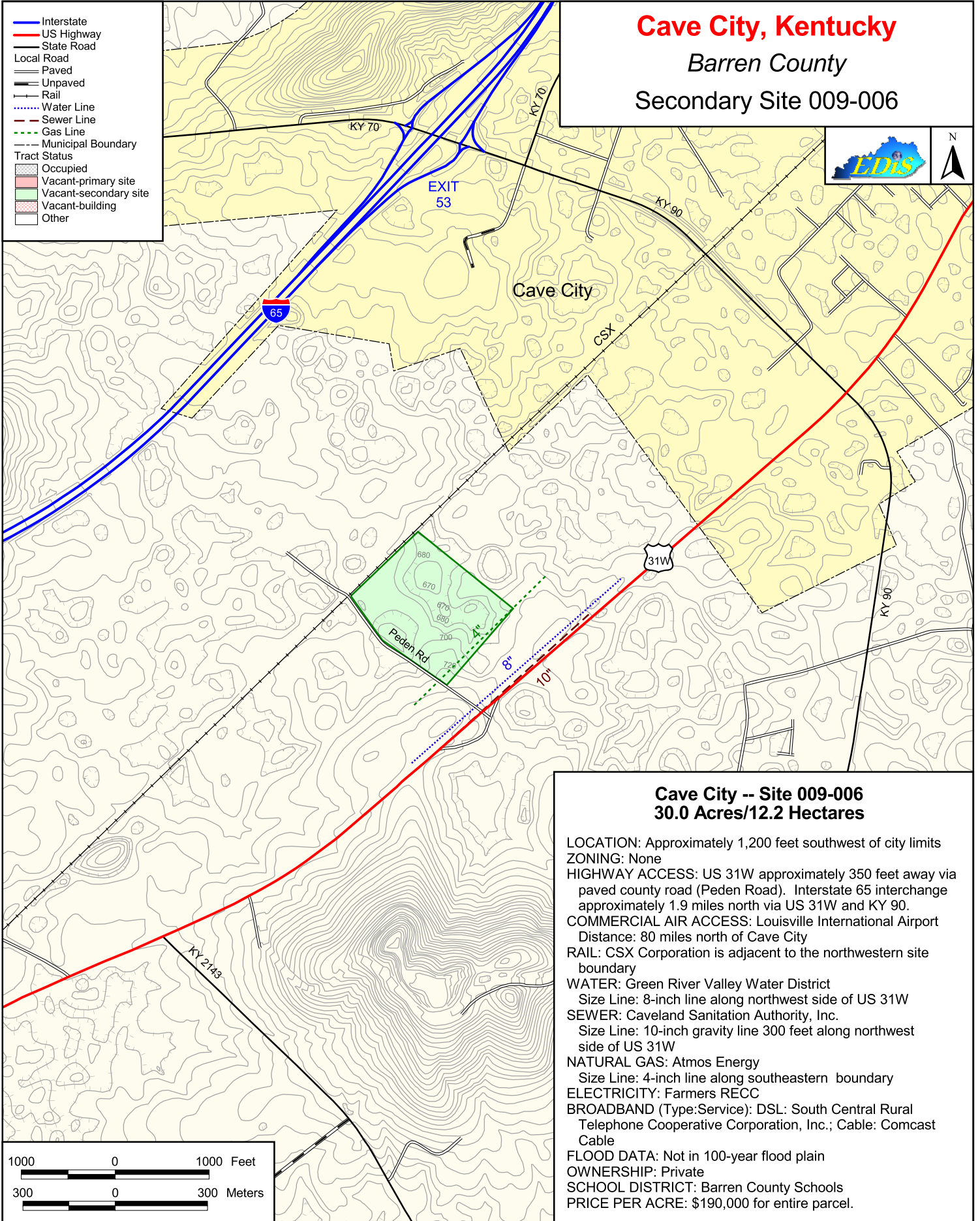


# Cave City, Kentucky

Barren County

Secondary Site 009-006



- Interstate
- US Highway
- State Road
- Local Road
- Paved
- Unpaved
- Rail
- Water Line
- Sewer Line
- Gas Line
- Municipal Boundary
- Tract Status
- Occupied
- Vacant-primary site
- Vacant-secondary site
- Vacant-building
- Other

## Cave City -- Site 009-006 30.0 Acres/12.2 Hectares

**LOCATION:** Approximately 1,200 feet southwest of city limits  
**ZONING:** None  
**HIGHWAY ACCESS:** US 31W approximately 350 feet away via paved county road (Peden Road). Interstate 65 interchange approximately 1.9 miles north via US 31W and KY 90.  
**COMMERCIAL AIR ACCESS:** Louisville International Airport  
Distance: 80 miles north of Cave City  
**RAIL:** CSX Corporation is adjacent to the northwestern site boundary  
**WATER:** Green River Valley Water District  
Size Line: 8-inch line along northwest side of US 31W  
**SEWER:** Caveland Sanitation Authority, Inc.  
Size Line: 10-inch gravity line 300 feet along northwest side of US 31W  
**NATURAL GAS:** Atmos Energy  
Size Line: 4-inch line along southeastern boundary  
**ELECTRICITY:** Farmers RECC  
**BROADBAND (Type:Service):** DSL: South Central Rural Telephone Cooperative Corporation, Inc.; Cable: Comcast Cable  
**FLOOD DATA:** Not in 100-year flood plain  
**OWNERSHIP:** Private  
**SCHOOL DISTRICT:** Barren County Schools  
**PRICE PER ACRE:** \$190,000 for entire parcel.



# Cave City, Kentucky

## Barren County



- Interstate
- US Highway
- State Road
- Local Road
- Paved
- Unpaved
- Rail
- Municipal Boundary
- County Boundary
- Tract Status
- Occupied
- Vacant-primary site
- Vacant-secondary site
- Vacant-building
- Other

