

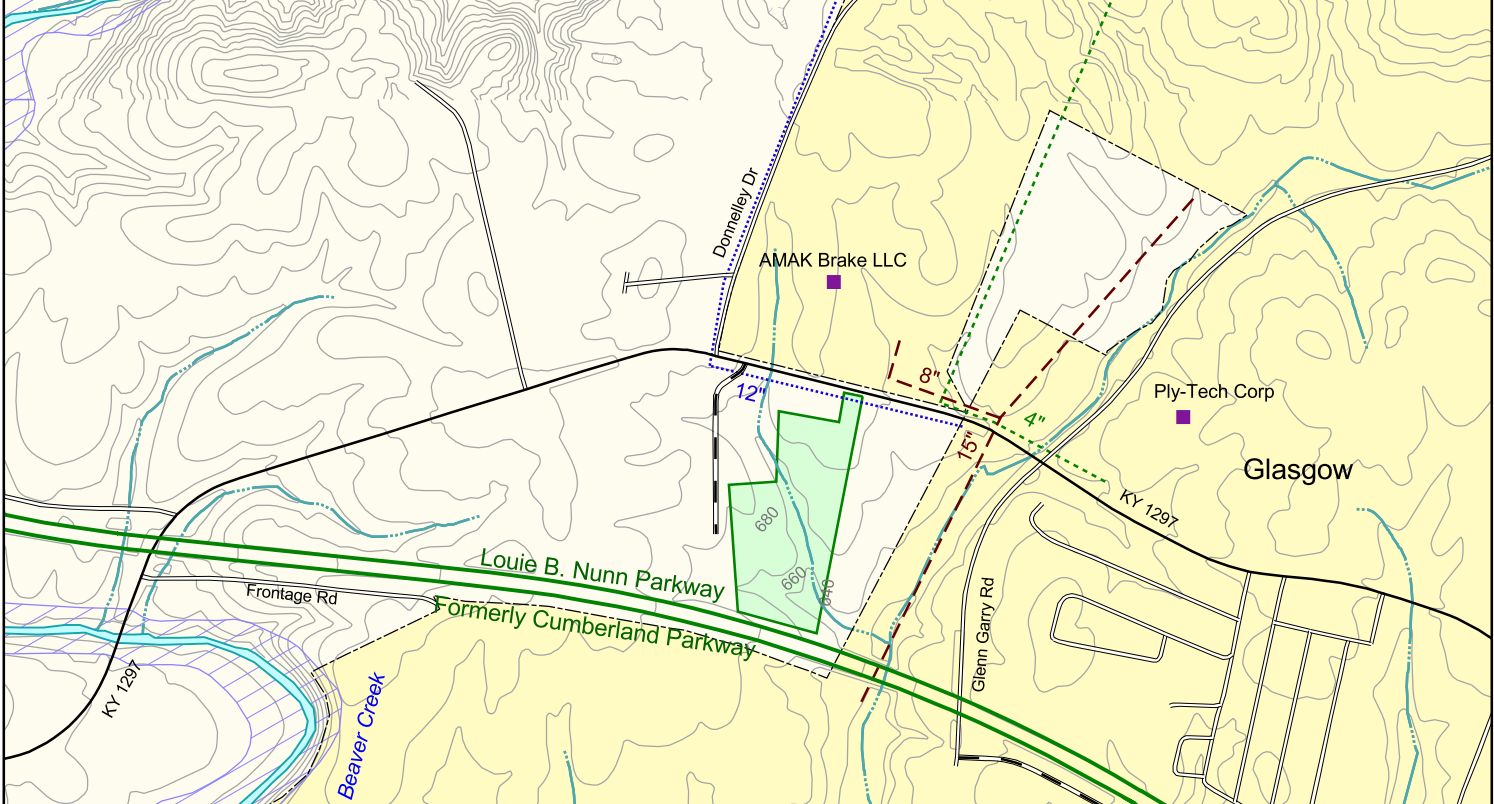
Glasgow, Kentucky

Barren County

Site 009-003

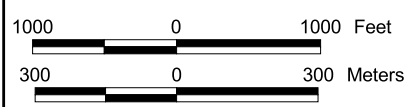


- Existing Industry
- Parkway
- State Road
- Local Road
- Paved
- Unpaved
- Water Line
- Sewer Line
- Gas Line
- Substation
- Municipal Boundary
- 100 Year Flood Zone
- Tract Status
 - Occupied
 - Vacant-primary site
 - Vacant-secondary site
 - Vacant-building
 - Other



Glasgow -- Site 009-003 21.9 Acres/8.9 Hectares

LOCATION: Adjacent to southwestern city limits of Glasgow
ZONING: Not Zoned
HIGHWAY ACCESS: KY 1297 along northern boundary; Louie B. Nunn Parkway interchange approximately 2.3 miles southeast via KY 1297 and US 31E Bypass
COMMERCIAL AIR ACCESS: Louisville International-Standiford Field
Distance: 90 miles north of Glasgow
RAIL: Not rail served
WATER: Glasgow Water Company
Size Line: 12-inch line along northern boundary
SEWER: Glasgow Water Company
Size Line: 8-inch gravity line 300 feet northeast of site; 15-inch gravity line 700 feet east of site
NATURAL GAS: Atmos Energy Corporation
Size Line: 4-inch line 500 feet northeast across KY 1297
ELECTRICITY: Farmers RECC
BROADBAND (Type:Service): DSL: Alltel, South Central Rural Telephone Cooperative Corporation Inc.
FLOOD DATA: Not in 100-year flood plain
OWNERSHIP: Private
SCHOOL DISTRICT: Barren County Schools
PRICE PER ACRE: \$25,000



For more information contact the Kentucky Cabinet for Economic Development, Department for Business Development
Old Capitol Annex - 300 West Broadway - Frankfort, KY 40601 - Tel:(502)564-7140 - Fax:(502)564-3256 - <http://www.thinkkentucky.com>
All information regarding property is from sources deemed reliable, but no warranty or representation is made by the Commonwealth of Kentucky or any of its agencies as to its accuracy. It is subject to errors, omissions, change of price, prior sale, lease, or withdrawal without our knowledge. Further, no warranty or representation is made as to the environmental suitability or condition of the property. Prospective purchasers and/or lessees should perform their own due diligence in determining the suitability of a property for their intended use.

Glasgow, Kentucky

Barren County



- University/College
- Fire Station
- Local Airport
- Available Building
- Parkway
- US Highway
- State Road
- Local Road
- Paved
- Unpaved
- Rail
- Municipal Boundary
- Tract Status
- Occupied
- Vacant-primary site
- Vacant-secondary site
- Vacant-building
- Other

