

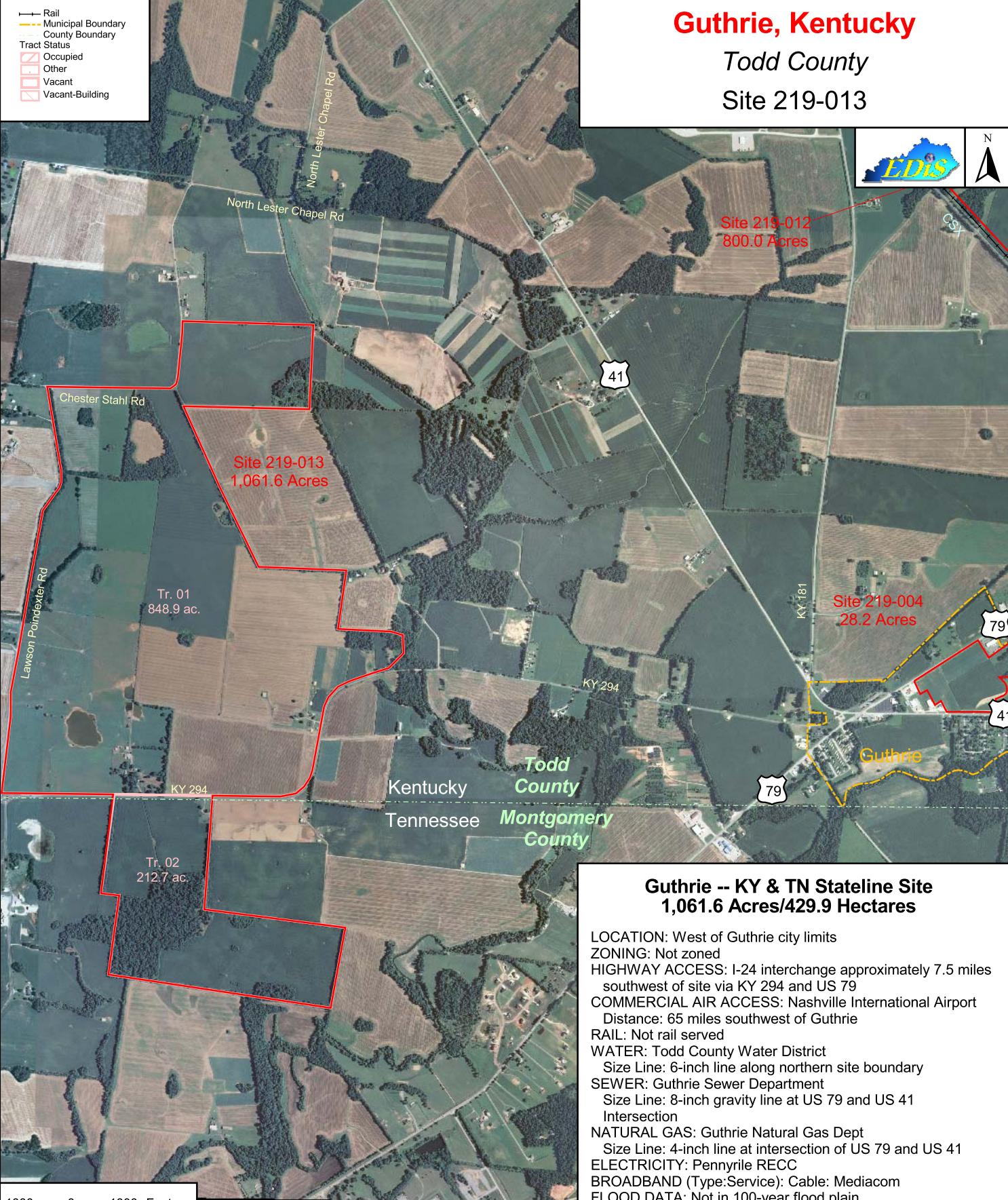
Guthrie, Kentucky

Todd County

Site 219-013

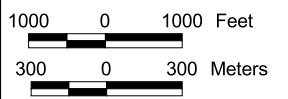


Rail
 Municipal Boundary
 County Boundary
Tract Status
 Occupied
 Other
 Vacant
 Vacant-Building



Guthrie -- KY & TN Stateline Site 1,061.6 Acres/429.9 Hectares

- LOCATION: West of Guthrie city limits
- ZONING: Not zoned
- HIGHWAY ACCESS: I-24 interchange approximately 7.5 miles southwest of site via KY 294 and US 79
- COMMERCIAL AIR ACCESS: Nashville International Airport
Distance: 65 miles southwest of Guthrie
- RAIL: Not rail served
- WATER: Todd County Water District
Size Line: 6-inch line along northern site boundary
- SEWER: Guthrie Sewer Department
Size Line: 8-inch gravity line at US 79 and US 41 Intersection
- NATURAL GAS: Guthrie Natural Gas Dept
Size Line: 4-inch line at intersection of US 79 and US 41
- ELECTRICITY: Pennyriile RECC
- BROADBAND (Type:Service): Cable: Mediacom
- FLOOD DATA: Not in 100-year flood plain
- OWNERSHIP: Optioned by Todd County Industrial Foundation
- SCHOOL DISTRICT: Todd County Schools
- PRICE PER ACRE: \$22,500



For more information contact the Kentucky Cabinet for Economic Development, Department for Business Development
Old Capitol Annex - 300 West Broadway - Frankfort, KY 40601 - Tel:(502)564-7140 - Fax:(502)564-3256 - <http://www.thinkkentucky.com>

Map Date: 06/15/2011
Photo Date: Summer 2008

All information regarding property is from sources deemed reliable, but no warranty or representation is made by the Commonwealth of Kentucky or any of its agencies as to its accuracy. It is subject to errors, omissions, change of price, prior sale, lease, or withdrawal without our knowledge. Further, no warranty or representation is made as to the environmental suitability or condition of the property. Prospective purchasers and/or lessees should perform their own due diligence in determining the suitability of a property for their intended use.