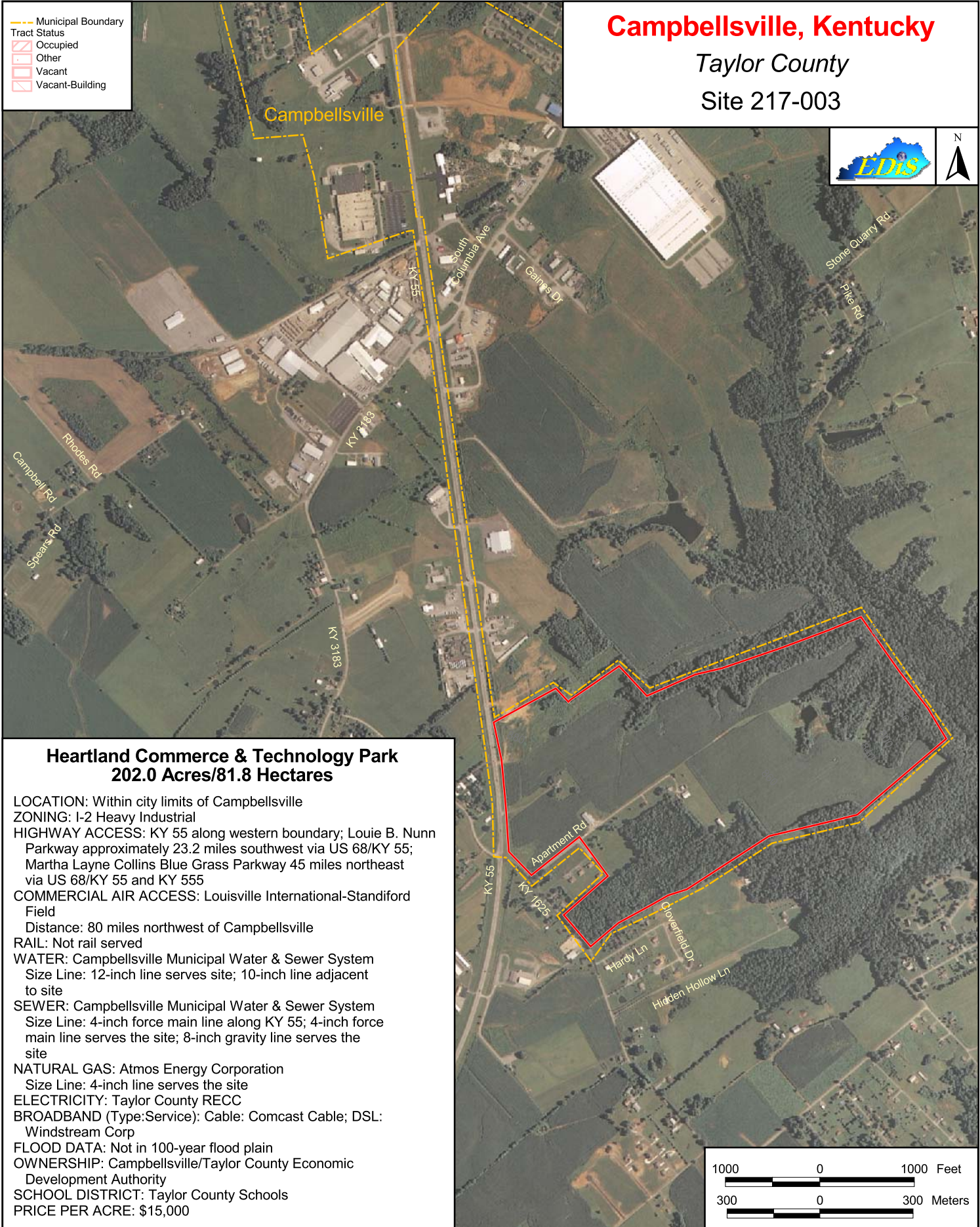


Campbellsville, Kentucky

Taylor County

Site 217-003



Heartland Commerce & Technology Park 202.0 Acres/81.8 Hectares

LOCATION: Within city limits of Campbellsville
ZONING: I-2 Heavy Industrial
HIGHWAY ACCESS: KY 55 along western boundary; Louie B. Nunn Parkway approximately 23.2 miles southwest via US 68/KY 55; Martha Layne Collins Blue Grass Parkway 45 miles northeast via US 68/KY 55 and KY 555
COMMERCIAL AIR ACCESS: Louisville International-Standiford Field
Distance: 80 miles northwest of Campbellsville
RAIL: Not rail served
WATER: Campbellsville Municipal Water & Sewer System
Size Line: 12-inch line serves site; 10-inch line adjacent to site
SEWER: Campbellsville Municipal Water & Sewer System
Size Line: 4-inch force main line along KY 55; 4-inch force main line serves the site; 8-inch gravity line serves the site
NATURAL GAS: Atmos Energy Corporation
Size Line: 4-inch line serves the site
ELECTRICITY: Taylor County RECC
BROADBAND (Type:Service): Cable: Comcast Cable; DSL: Windstream Corp
FLOOD DATA: Not in 100-year flood plain
OWNERSHIP: Campbellsville/Taylor County Economic Development Authority
SCHOOL DISTRICT: Taylor County Schools
PRICE PER ACRE: \$15,000

For more information contact the Kentucky Cabinet for Economic Development, Department for Business Development
Old Capitol Annex - 300 West Broadway - Frankfort, KY 40601 - Tel:(502)564-7140 - Fax:(502)564-3256 - <http://www.thinkkentucky.com>

All information regarding property is from sources deemed reliable, but no warranty or representation is made by the Commonwealth of Kentucky or any of its agencies as to its accuracy. It is subject to errors, omissions, change of price, prior sale, lease, or withdrawal without our knowledge. Further, no warranty or representation is made as to the environmental suitability or condition of the property. Prospective purchasers and/or lessees should perform their own due diligence in determining the suitability of a property for their intended use.

Map Date: 08/02/2010
Photo Date: 7/27/2006