

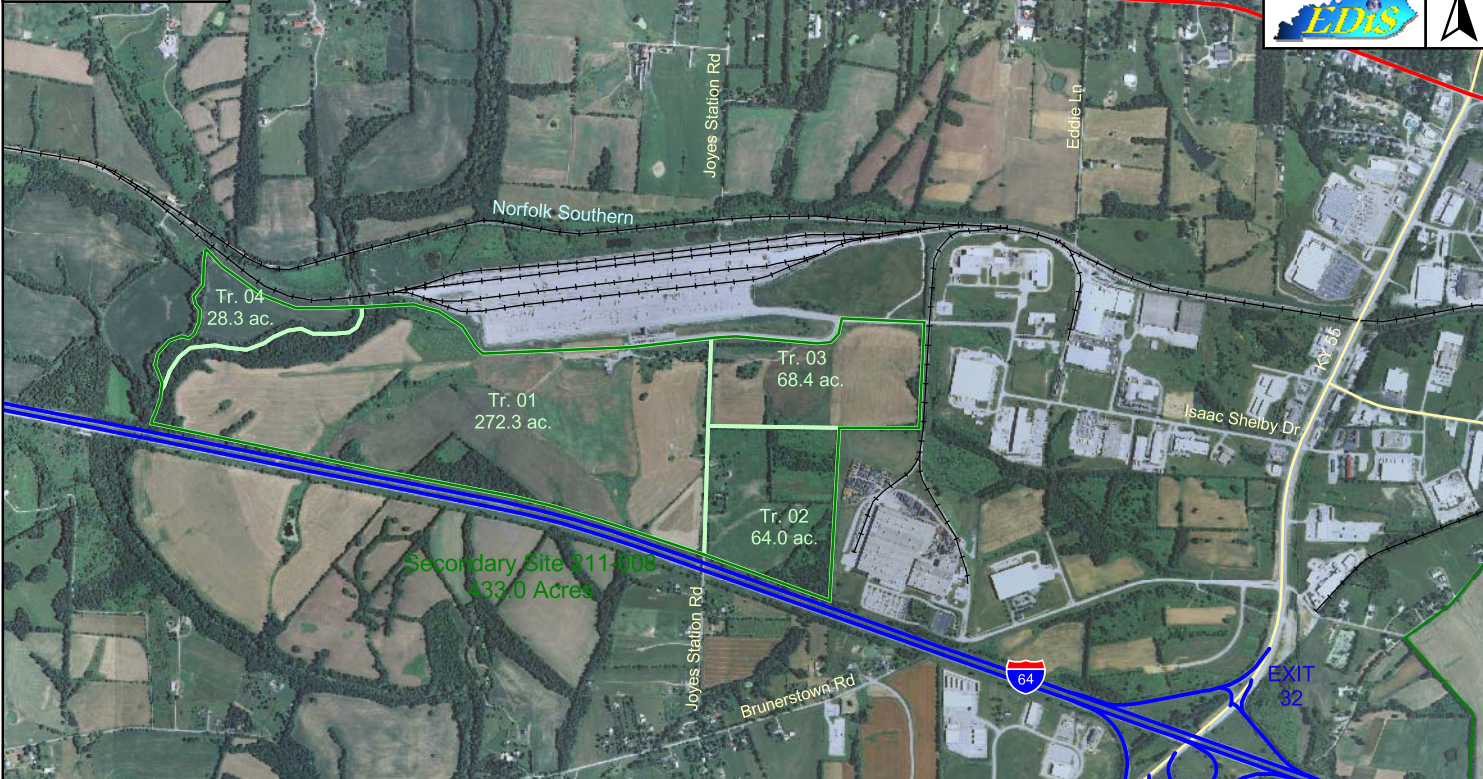
Shelbyville, Kentucky

Shelby County

Secondary Site 211-008



- Interstate
- US Highway
- State Road
- Rail
- Tract Status
- Occupied
- Other
- Vacant-Building
- Vacant
- Vacant-secondary



Norfolk Southern Site 433.0 Acres/175.4 Hectares

LOCATION: Approximately 9,000 feet southwest of Shelbyville city limits

ZONING: Tracts 01 & 04 Agriculture; Tracts 02 & 03 I-1 Industrial

HIGHWAY ACCESS: I-64 approximately 9,000 feet southeast via paved access road (Isaac Shelby Drive) and KY 55

COMMERCIAL AIR ACCESS: Louisville International-Standiford Field
Distance: 37 miles west of site

RAIL: †Norfolk Southern Railway located near northern and adjacent to eastern site boundaries

WATER: Shelbyville Municipal Water and Sewer Commission; West Shelby Water District
Size Line: 12-inch line serves the site; 12-inch line serves the site; 12-inch line serves the site

SEWER: Shelbyville Municipal Water and Sewer Commission
Size Line: 10-inch gravity line ; 10-inch gravity line ; 10-inch gravity line ; 6-inch force main line serves the site

NATURAL GAS: Atmos Energy Corporation
Size Line: 4-inch line serves the site

ELECTRICITY: Shelby Energy Cooperative Inc

BROADBAND (Type:Service): Cable: Insight Communications; DSL: AT&T

FLOOD DATA: Site is partially within 100-year flood plain

OWNERSHIP: Tracts 01, 03 & 04: Norfolk Southern Railroad; Tract 02: Private

SCHOOL DISTRICT: Shelby County Schools

PRICE PER ACRE: Tract 02 \$65,000 to \$85,000; Tracts 01, 03 & 04 \$50,000-\$70,000

