






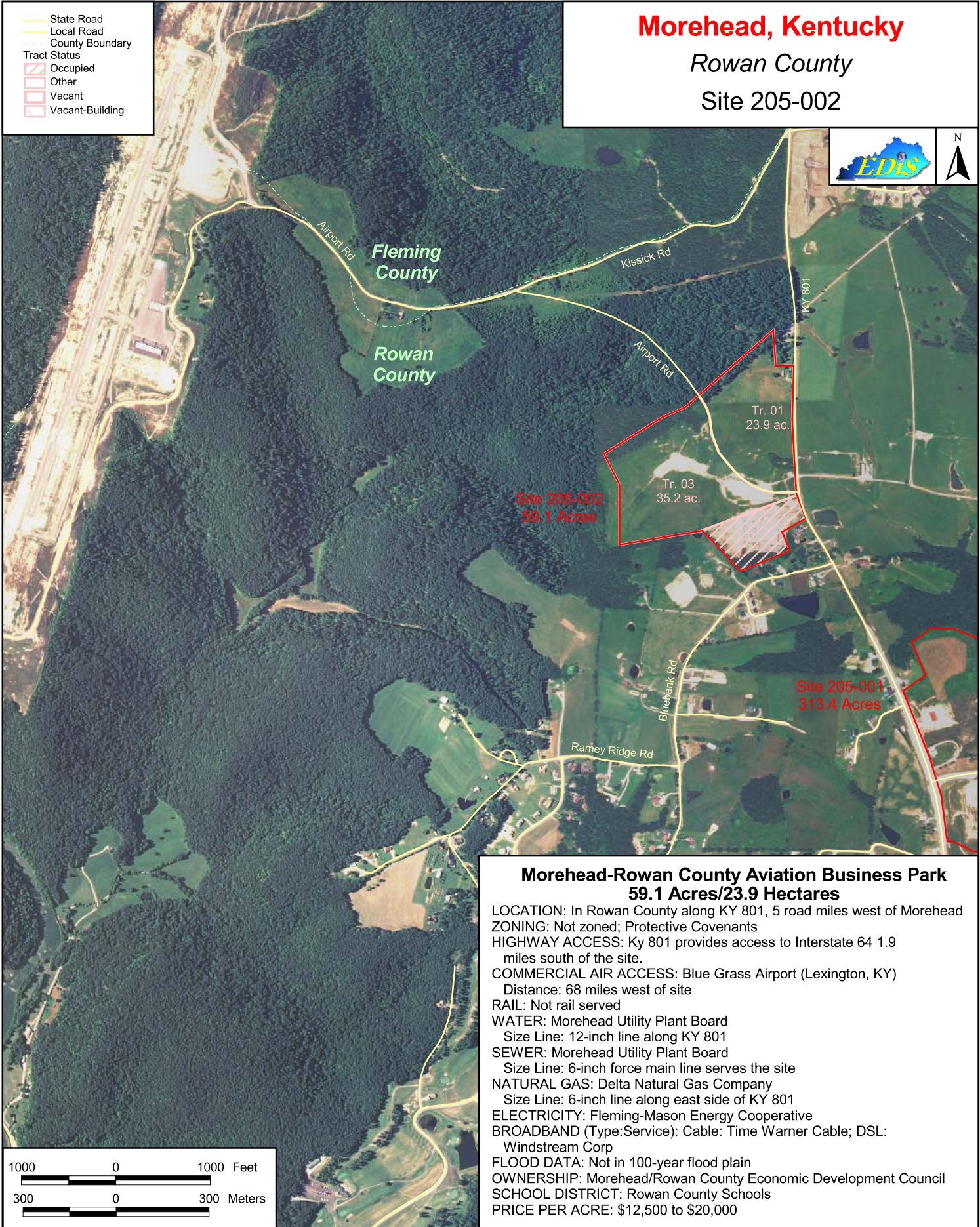


-  State Road
-  Local Road
-  County Boundary
- Tract Status
-  Occupied
-  Other
-  Vacant
-  Vacant-Building

# Morehead, Kentucky

Rowan County

Site 205-002



Site 205-002  
59.1 Acres

Tr. 01  
23.9 ac.

Tr. 03  
35.2 ac.

Site 205-001  
313.4 Acres

### Morehead-Rowan County Aviation Business Park 59.1 Acres/23.9 Hectares

**LOCATION:** In Rowan County along KY 801, 5 road miles west of Morehead  
**ZONING:** Not zoned; Protective Covenants  
**HIGHWAY ACCESS:** Ky 801 provides access to Interstate 64 1.9 miles south of the site.  
**COMMERCIAL AIR ACCESS:** Blue Grass Airport (Lexington, KY)  
 Distance: 68 miles west of site  
**RAIL:** Not rail served  
**WATER:** Morehead Utility Plant Board  
 Size Line: 12-inch line along KY 801  
**SEWER:** Morehead Utility Plant Board  
 Size Line: 6-inch force main line serves the site  
**NATURAL GAS:** Delta Natural Gas Company  
 Size Line: 6-inch line along east side of KY 801  
**ELECTRICITY:** Fleming-Mason Energy Cooperative  
**BROADBAND (Type:Service):** Cable: Time Warner Cable; DSL: Windstream Corp  
**FLOOD DATA:** Not in 100-year flood plain  
**OWNERSHIP:** Morehead/Rowan County Economic Development Council  
**SCHOOL DISTRICT:** Rowan County Schools  
**PRICE PER ACRE:** \$12,500 to \$20,000



For more information contact the Kentucky Cabinet for Economic Development, Department for Business Development  
 Old Capitol Annex - 300 West Broadway - Frankfort, KY 40601 - Tel:(502)564-7140 - Fax:(502)564-3256 - <http://www.thinkkentucky.com>

Map Date: 11/22/2011  
 Photo Date: Summer 2008

All information regarding property is from sources deemed reliable, but no warranty or representation is made by the Commonwealth of Kentucky or any of its agencies as to its accuracy. It is subject to errors, omissions, change of price, prior sale, lease, or withdrawal without our knowledge. Further, no warranty or representation is made as to the environmental suitability or condition of the property. Prospective purchasers and/or lessees should perform their own due diligence in determining the suitability of a property for their intended use.