

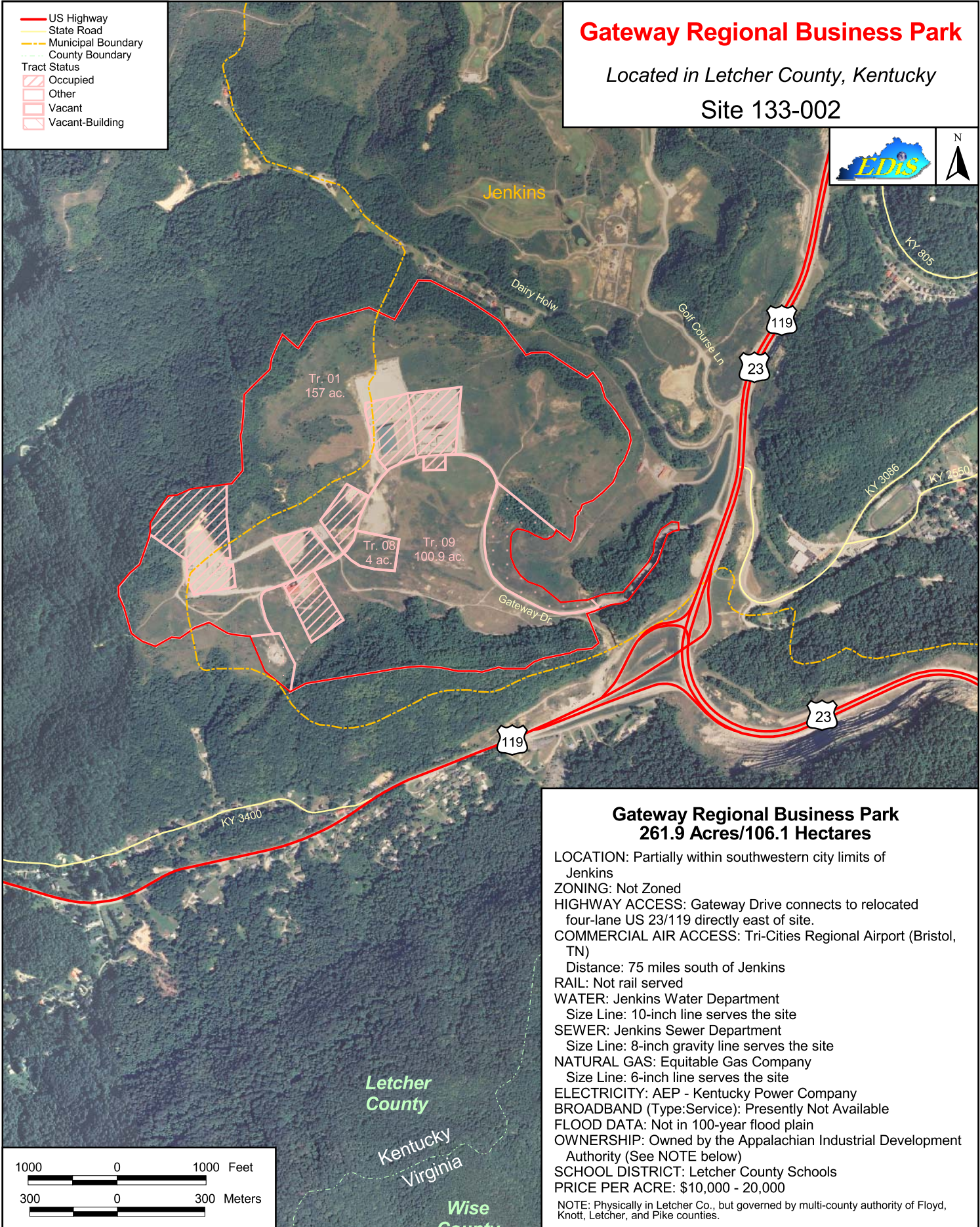
Gateway Regional Business Park

Located in Letcher County, Kentucky

Site 133-002

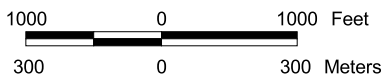


- US Highway
- State Road
- - - Municipal Boundary
- - - County Boundary
- Tract Status
- Occupied
- Other
- Vacant
- Vacant-Building



Gateway Regional Business Park 261.9 Acres/106.1 Hectares

- LOCATION: Partially within southwestern city limits of Jenkins
- ZONING: Not Zoned
- HIGHWAY ACCESS: Gateway Drive connects to relocated four-lane US 23/119 directly east of site.
- COMMERCIAL AIR ACCESS: Tri-Cities Regional Airport (Bristol, TN)
Distance: 75 miles south of Jenkins
- RAIL: Not rail served
- WATER: Jenkins Water Department
Size Line: 10-inch line serves the site
- SEWER: Jenkins Sewer Department
Size Line: 8-inch gravity line serves the site
- NATURAL GAS: Equitable Gas Company
Size Line: 6-inch line serves the site
- ELECTRICITY: AEP - Kentucky Power Company
- BROADBAND (Type:Service): Presently Not Available
- FLOOD DATA: Not in 100-year flood plain
- OWNERSHIP: Owned by the Appalachian Industrial Development Authority (See NOTE below)
- SCHOOL DISTRICT: Letcher County Schools
- PRICE PER ACRE: \$10,000 - 20,000
- NOTE: Physically in Letcher Co., but governed by multi-county authority of Floyd, Knott, Letcher, and Pike counties.



For more information contact the Kentucky Cabinet for Economic Development, Department for Business Development
Old Capitol Annex - 300 West Broadway - Frankfort, KY 40601 - Tel:(502)564-7140 - Fax:(502)564-3256 - <http://www.thinkkentucky.com>

Map Date: 10/24/2011
Photo Date: Summer 2008

All information regarding property is from sources deemed reliable, but no warranty or representation is made by the Commonwealth of Kentucky or any of its agencies as to its accuracy. It is subject to errors, omissions, change of price, prior sale, lease, or withdrawal without our knowledge. Further, no warranty or representation is made as to the environmental suitability or condition of the property. Prospective purchasers and/or lessees should perform their own due diligence in determining the suitability of a property for their intended use.