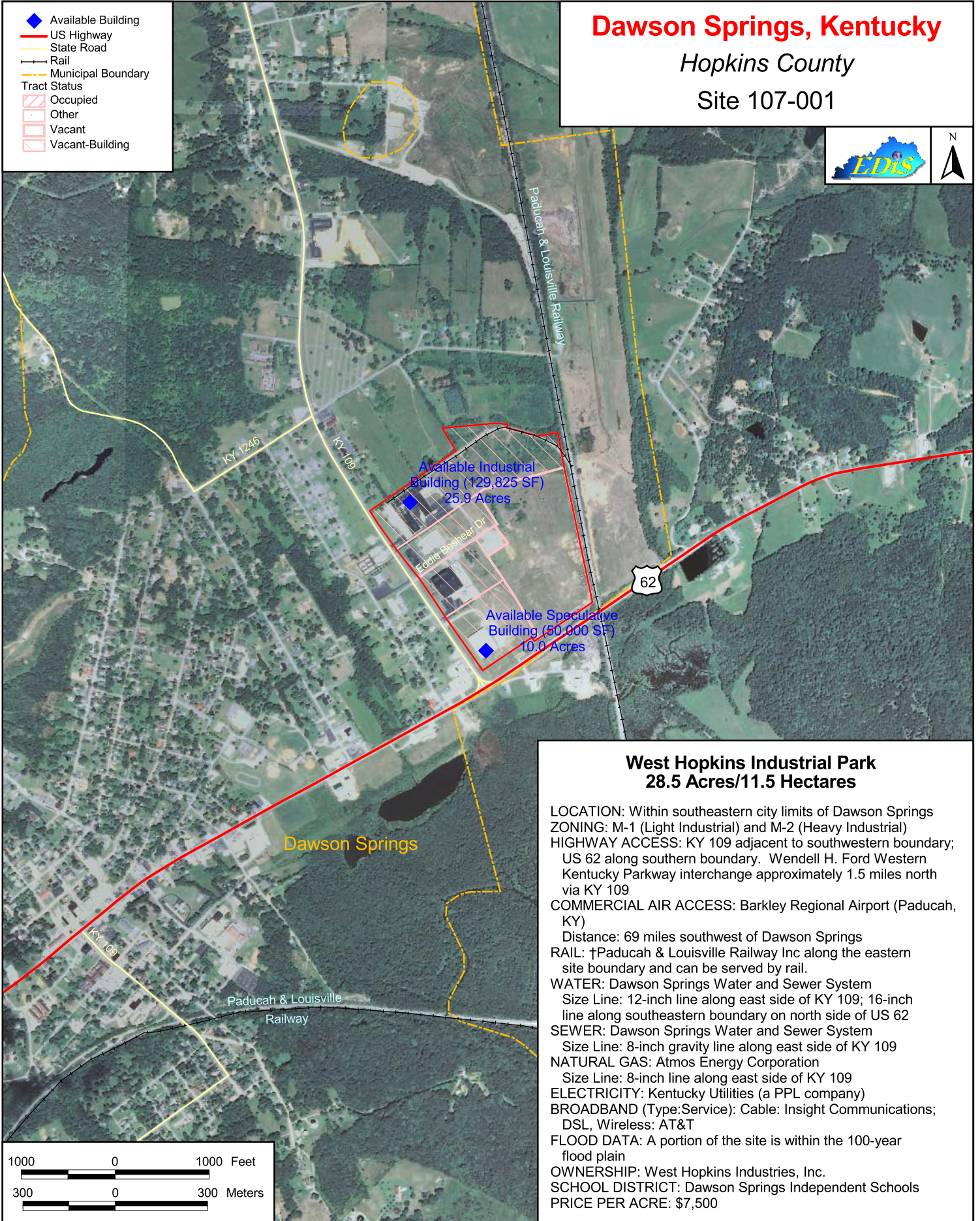


# Dawson Springs, Kentucky

Hopkins County

Site 107-001



## West Hopkins Industrial Park 28.5 Acres/11.5 Hectares

**LOCATION:** Within southeastern city limits of Dawson Springs  
**ZONING:** M-1 (Light Industrial) and M-2 (Heavy Industrial)  
**HIGHWAY ACCESS:** KY 109 adjacent to southwestern boundary; US 62 along southern boundary. Wendell H. Ford Western Kentucky Parkway interchange approximately 1.5 miles north via KY 109  
**COMMERCIAL AIR ACCESS:** Barkley Regional Airport (Paducah, KY)  
Distance: 69 miles southwest of Dawson Springs  
**RAIL:** †Paducah & Louisville Railway Inc along the eastern site boundary and can be served by rail.  
**WATER:** Dawson Springs Water and Sewer System  
Size Line: 12-inch line along east side of KY 109; 16-inch line along southeastern boundary on north side of US 62  
**SEWER:** Dawson Springs Water and Sewer System  
Size Line: 8-inch gravity line along east side of KY 109  
**NATURAL GAS:** Atmos Energy Corporation  
Size Line: 8-inch line along east side of KY 109  
**ELECTRICITY:** Kentucky Utilities (a PPL company)  
**BROADBAND (Type:Service):** Cable: Insight Communications; DSL, Wireless: AT&T  
**FLOOD DATA:** A portion of the site is within the 100-year flood plain  
**OWNERSHIP:** West Hopkins Industries, Inc.  
**SCHOOL DISTRICT:** Dawson Springs Independent Schools  
**PRICE PER ACRE:** \$7,500

