

Leitchfield, Kentucky

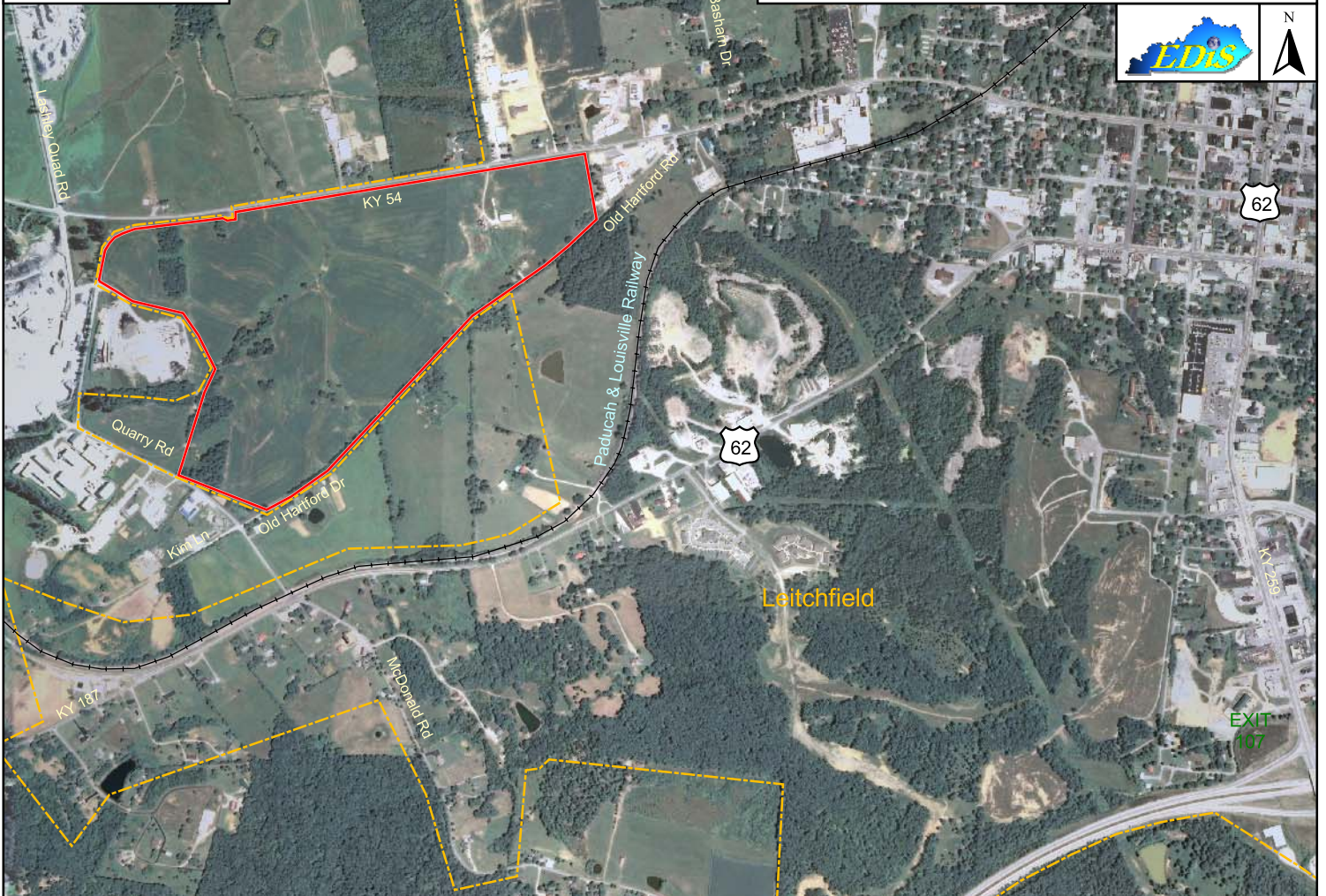
Grayson County

Site 085-009



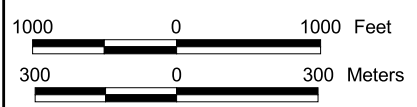
Legend:

- Rail
- Municipal Boundary
- Tract Status
 - Occupied
 - Other
 - Vacant
 - Vacant-Building



Leitchfield -- Site 085-009 125.9 Acres/51.0 Hectares

LOCATION: Within west city limits of Leitchfield
ZONING: I-2 (Heavy Industrial)
HIGHWAY ACCESS: US 62 is 1/4 mile from site via Quarry Rd.;
Wendell H. Ford Western Kentucky parkway interchange
approximately 2.6 miles via US 62 and KY 259
COMMERCIAL AIR ACCESS: Louisville International-Standiford
Field
Distance: 72 miles northeast of site
RAIL: Not rail served
WATER: Grayson County Water District
Size Line: 12-inch line north edge of site
SEWER: Leitchfield Utilities
Size Line: 4-inch force main line 500 feet east of site;
8-inch gravity line 500 feet east of site
NATURAL GAS: Leitchfield Utilities
Size Line: 4-inch line south edge of site
ELECTRICITY: Kentucky Utilities (a PPL company) ; Warren
RECC
BROADBAND (Type:Service): DSL: Windstream Corp
FLOOD DATA: Not in 100-year flood plain
OWNERSHIP: City of Leitchfield
SCHOOL DISTRICT: Grayson County Schools
PRICE PER ACRE: \$12,500



For more information contact the Kentucky Cabinet for Economic Development, Department for Business Development
Old Capitol Annex - 300 West Broadway - Frankfort, KY 40601 - Tel:(502)564-7140 - Fax:(502)564-3256 - <http://www.thinkkentucky.com>
All information regarding property is from sources deemed reliable, but no warranty or representation is made by the Commonwealth of Kentucky or any of its agencies as to its accuracy.
It is subject to errors, omissions, change of price, prior sale, lease, or withdrawal without our knowledge. Further, no warranty or representation is made as to the environmental suitability
or condition of the property. Prospective purchasers and/or lessees should perform their own due diligence in determining the suitability of a property for their intended use.

Map Date: 05/12/2011
Photo Date: Summer 2008