

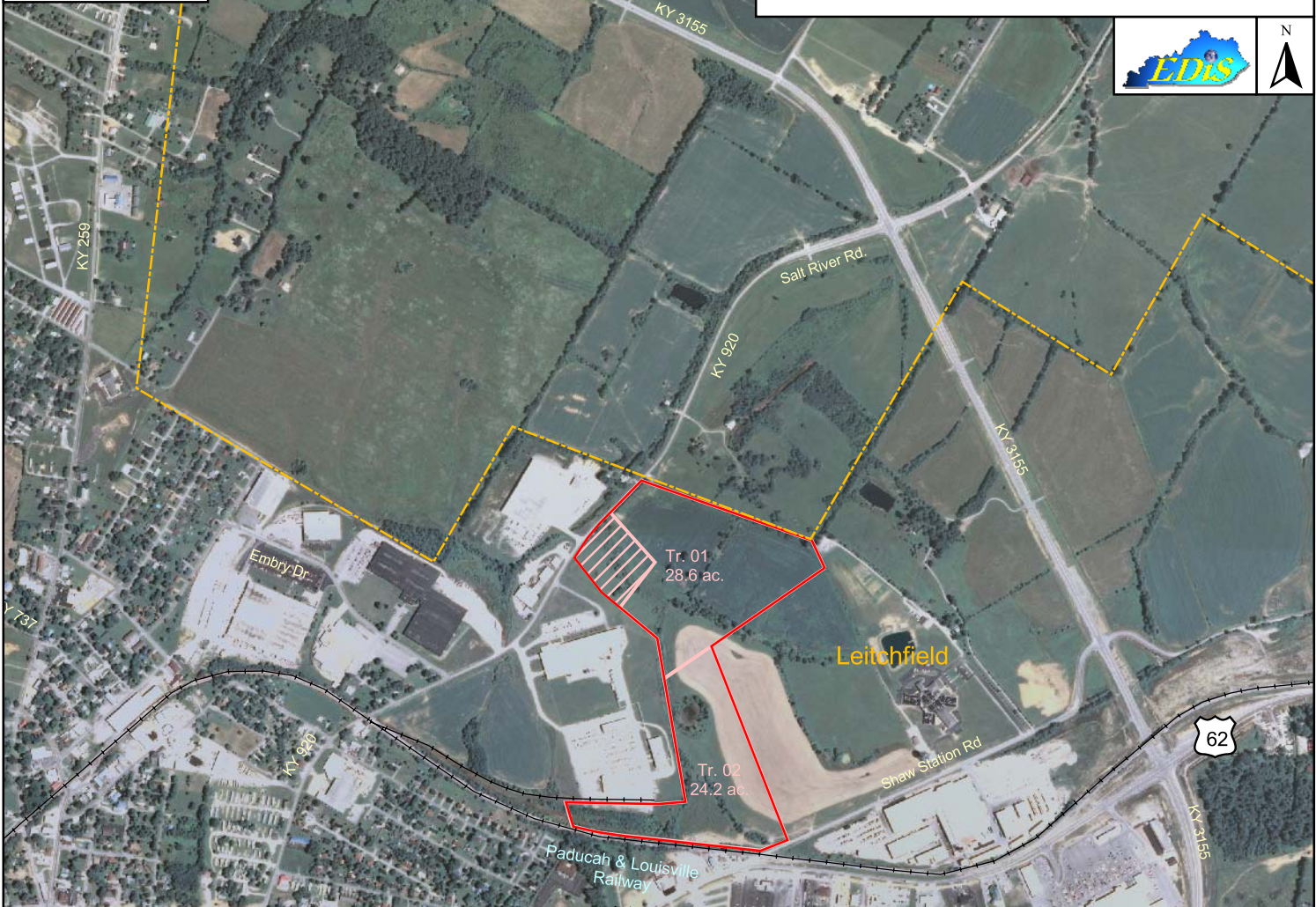
# Leitchfield, Kentucky

Grayson County

Site 085-008

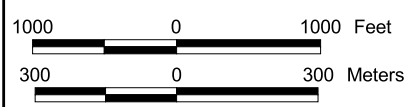


— Rail  
- - Municipal Boundary  
Tract Status  
Occupied  
Other  
Vacant  
Vacant-Building



## Leitchfield Industrial Site 52.8 Acres/21.4 Hectares

**LOCATION:** Within northeast city limits of Leitchfield  
**ZONING:** I-1 (Light Industrial)  
**HIGHWAY ACCESS:** KY 920 adjacent to western boundary of site; Wendell H. Ford Western Kentucky Parkway Interchange approximately 2.3 miles south via KY 920, US 62 and KY 259.  
**COMMERCIAL AIR ACCESS:** Louisville International-Standiford Field  
Distance: 71 miles northeast of site  
**RAIL:** †Paducah & Louisville Railway Inc  
**WATER:** Grayson County Water District; Leitchfield Utilities  
Size Line: 12-inch line serves the site  
**SEWER:** Leitchfield Utilities  
Size Line: 8-inch gravity line serves the site; 10-inch force main line on site; 12-inch gravity line on site  
**NATURAL GAS:** Leitchfield Utilities  
Size Line: 4-inch line on site  
**ELECTRICITY:** Warren RECC  
**BROADBAND (Type:Service):** Cable: Comcast Cable; DSL: Alltel  
**FLOOD DATA:** Not in 100-year flood plain  
**OWNERSHIP:** Tract 01, Leitchfield/Grayson Co. Industrial Development Foundation; Tract 02, Grayson Co. Government  
**SCHOOL DISTRICT:** Grayson County Schools  
**PRICE PER ACRE:** \$8,000



For more information contact the Kentucky Cabinet for Economic Development, Department for Business Development  
Old Capitol Annex - 300 West Broadway - Frankfort, KY 40601 - Tel:(502)564-7140 - Fax:(502)564-3256 - <http://www.thinkkentucky.com>

Map Date: 05/12/2011  
Photo Date: Summer 2008

All information regarding property is from sources deemed reliable, but no warranty or representation is made by the Commonwealth of Kentucky or any of its agencies as to its accuracy. It is subject to errors, omissions, change of price, prior sale, lease, or withdrawal without our knowledge. Further, no warranty or representation is made as to the environmental suitability or condition of the property. Prospective purchasers and/or lessees should perform their own due diligence in determining the suitability of a property for their intended use.