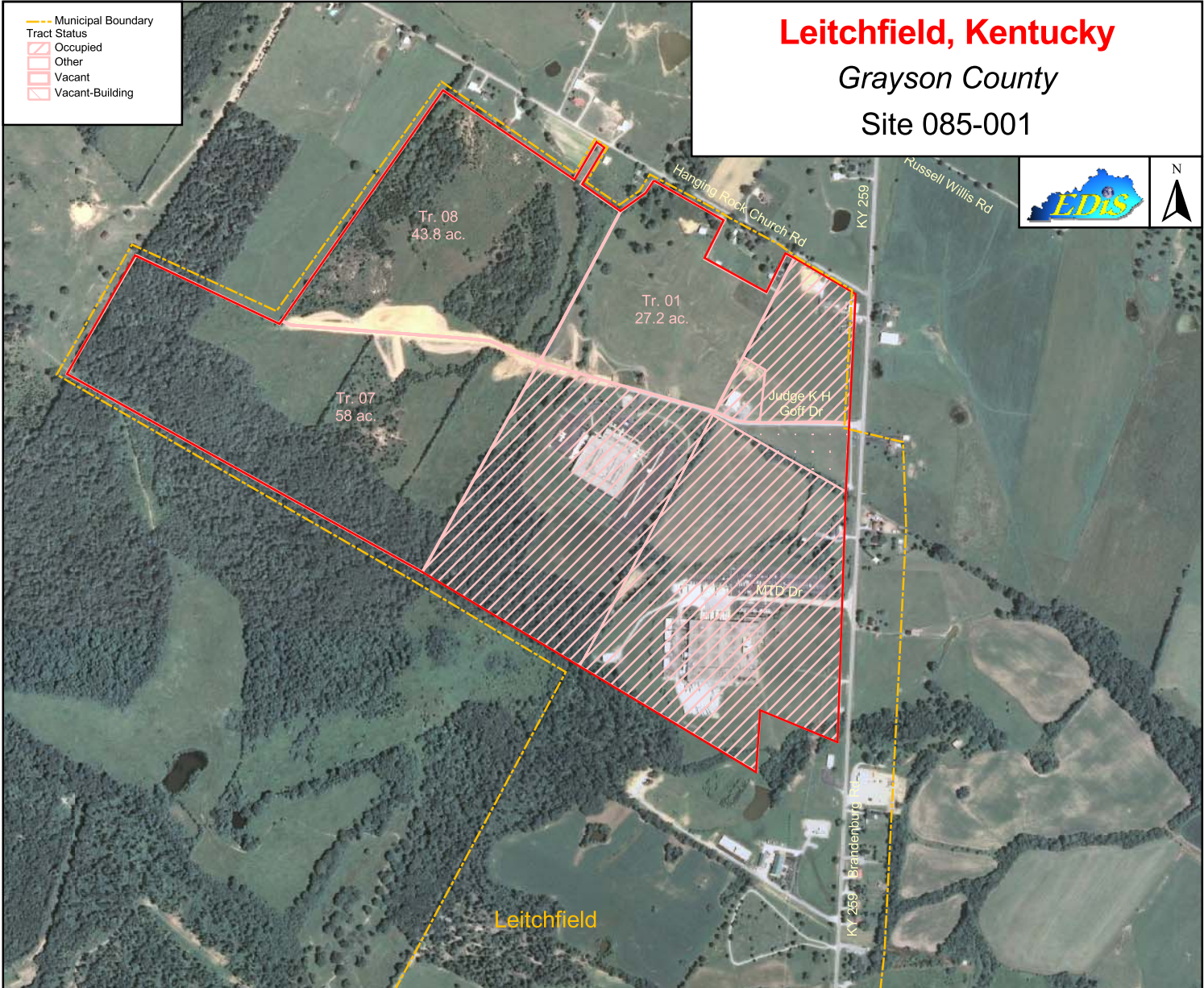


# Leitchfield, Kentucky

Grayson County

Site 085-001



- Municipal Boundary
- Tract Status
- Occupied
- Other
- Vacant
- Vacant-Building

## Judge Kenneth H. Goff Industrial Park 129.0 Acres/52.2 Hectares

**LOCATION:** Within northern city limits of Leitchfield  
**ZONING:** I-2 (Heavy Industrial)  
**HIGHWAY ACCESS:** KY 259 adjacent to eastern boundary;  
Wendell H. Ford Western Kentucky Parkway interchange  
approximately 3.6 miles south via KY 259  
**COMMERCIAL AIR ACCESS:** Louisville International-Standiford  
Field  
Distance: 73 miles northeast of site  
**RAIL:** Not rail served  
**WATER:** Leitchfield Utilities  
Size Line: 10-inch line on site  
**SEWER:** Leitchfield Utilities  
Size Line: 6-inch force main line on site  
**NATURAL GAS:** Leitchfield Utilities  
Size Line: 6-inch line on site  
**ELECTRICITY:** Warren RECC  
**BROADBAND (Type:Service):** Cable: Comcast Cable, Mediacom;  
DSL: Alltel  
**FLOOD DATA:** Not in 100-year flood plain  
**OWNERSHIP:** City of Leitchfield  
**SCHOOL DISTRICT:** Grayson County Schools  
**PRICE PER ACRE:** Tract 01 \$8,000; Tract 07 \$10,000



For more information contact the Kentucky Cabinet for Economic Development, Department for Business Development  
Old Capitol Annex - 300 West Broadway - Frankfort, KY 40601 - Tel:(502)564-7140 - Fax:(502)564-3256 - <http://www.thinkkentucky.com>

Map Date: 05/12/2011  
Photo Date: Summer 2008

*All information regarding property is from sources deemed reliable, but no warranty or representation is made by the Commonwealth of Kentucky or any of its agencies as to its accuracy. It is subject to errors, omissions, change of price, prior sale, lease, or withdrawal without our knowledge. Further, no warranty or representation is made as to the environmental suitability or condition of the property. Prospective purchasers and/or lessees should perform their own due diligence in determining the suitability of a property for their intended use.*