

Owensboro, Kentucky

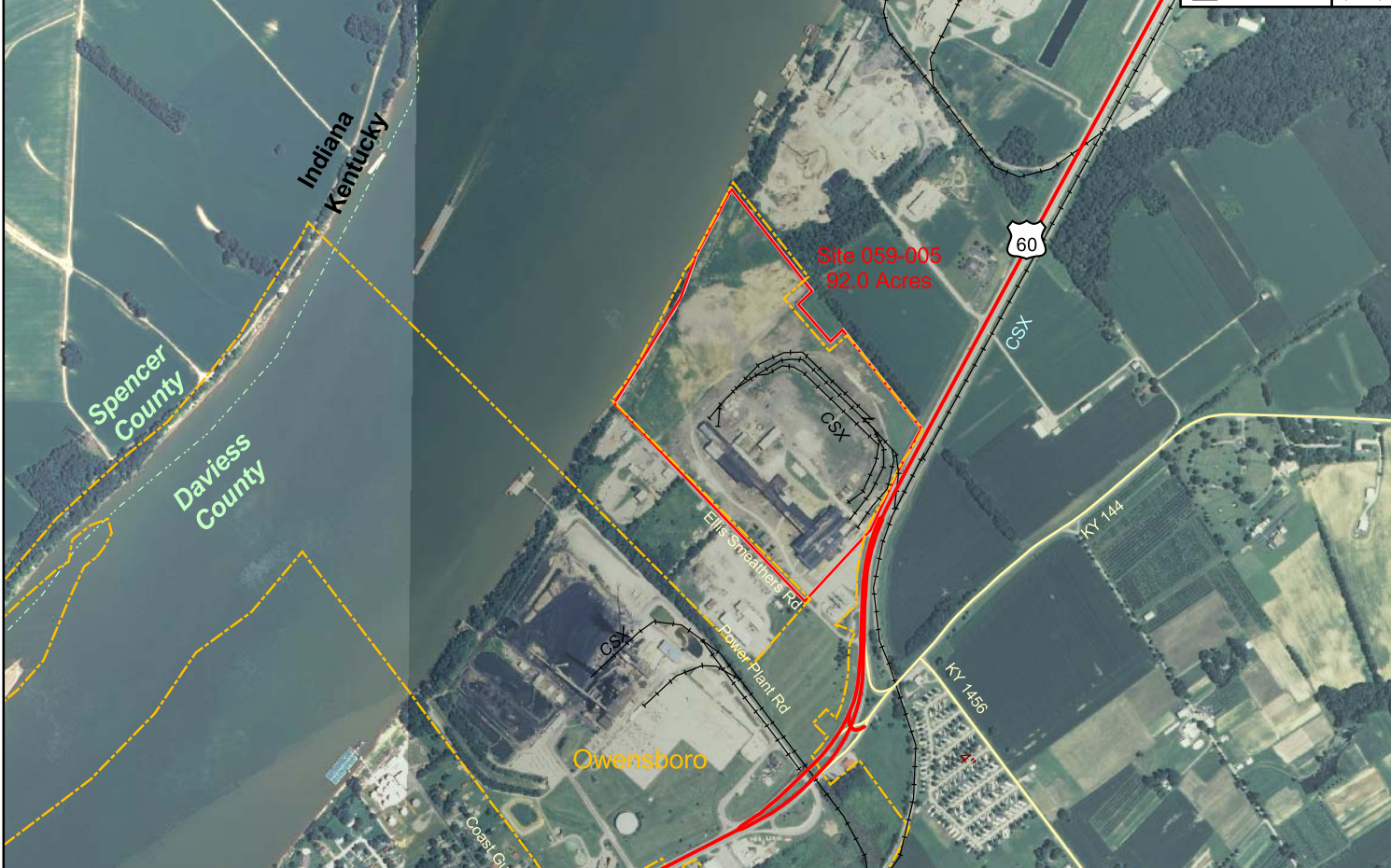
Daviess County

Site 059-005



Legend

- US Highway
- State Road
- Rail
- Municipal Boundary
- County Boundary
- Tract Status
 - Occupied
 - Other
 - Vacant
 - Vacant-Building



Owensboro Riverport East Industrial Site 92.0 Acres/37.3 Hectares

LOCATION: Within city limits of Owensboro
ZONING: I-2 (Heavy Industrial)
HIGHWAY ACCESS: US 60 west via paved access road to US 60 Bypass; William Natcher Parkway 5.0 miles south of site
COMMERCIAL AIR ACCESS: Daviess County Regional Airport
Distance: 9 miles southwest of site
RAIL: CSX Corporation has three spurs on site totaling 10,700 linear feet
WATER: East Daviess County Water Association
Size Line: 12-inch line 1,000 feet south along KY 144
SEWER: Regional Water Resource Agency (RWRA)
Size Line: 4-inch gravity line 1,500 feet south along KY 1456
NATURAL GAS: Atmos Energy Corporation
Size Line: 4-inch line along north side of US 60
ELECTRICITY: Kentucky Utilities (a PPL company)
BROADBAND (Type:Service): Cable: Time Warner Cable; DSL: AT&T; Wireless: Norlight Inc
FLOOD DATA: Northeast portion of site in 100-year flood plain
OWNERSHIP: Owensboro Riverport Authority
SCHOOL DISTRICT: Daviess County Schools
PRICE PER ACRE: \$50,000 or \$4,000,000 for entire acreage

