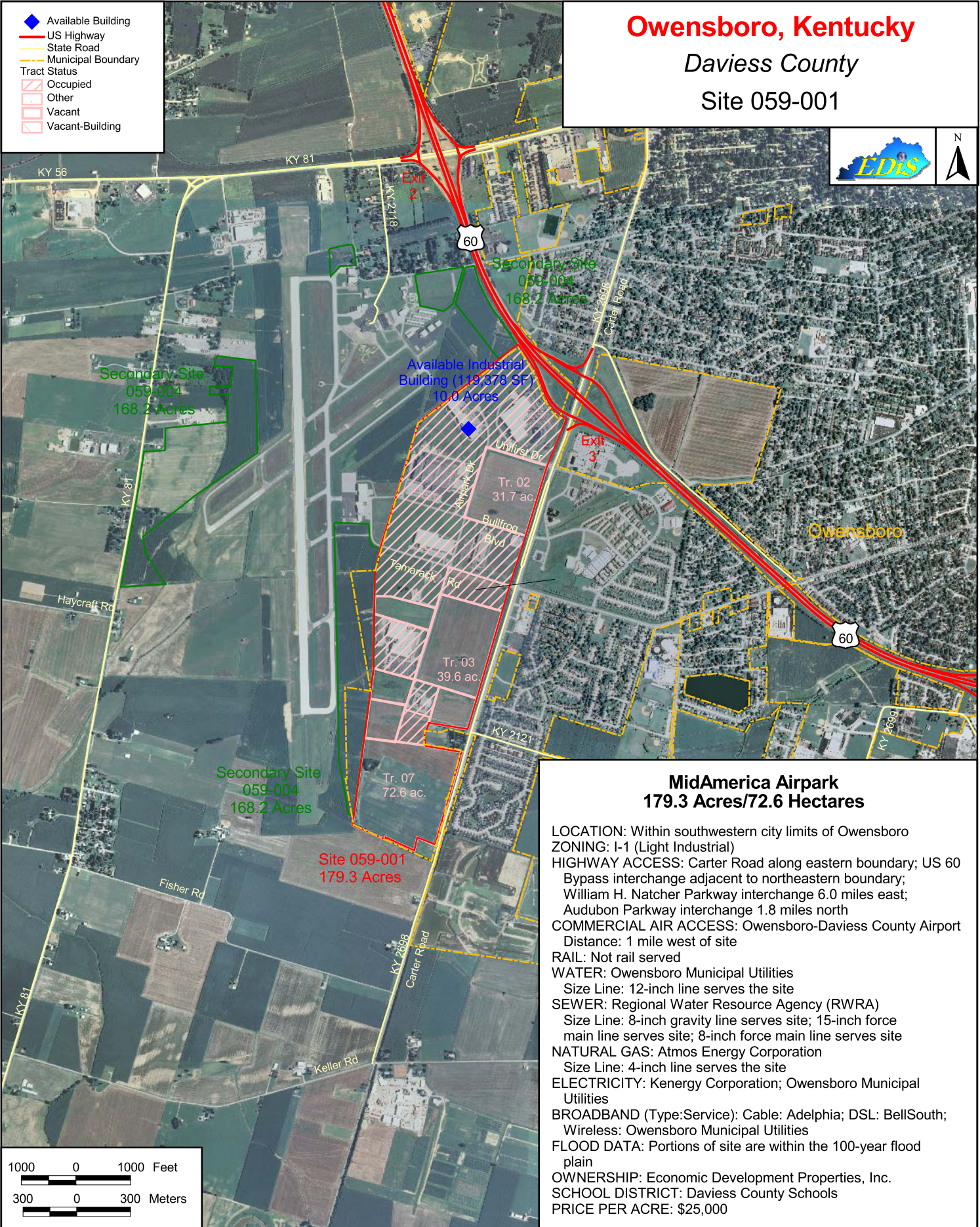


Owensboro, Kentucky

Daviess County

Site 059-001



MidAmerica Airpark 179.3 Acres/72.6 Hectares

LOCATION: Within southwestern city limits of Owensboro
ZONING: I-1 (Light Industrial)
HIGHWAY ACCESS: Carter Road along eastern boundary; US 60 Bypass interchange adjacent to northeastern boundary; William H. Natcher Parkway interchange 6.0 miles east; Audubon Parkway interchange 1.8 miles north
COMMERCIAL AIR ACCESS: Owensboro-Daviess County Airport
Distance: 1 mile west of site
RAIL: Not rail served
WATER: Owensboro Municipal Utilities
Size Line: 12-inch line serves the site
SEWER: Regional Water Resource Agency (RWRA)
Size Line: 8-inch gravity line serves site; 15-inch force main line serves site; 8-inch force main line serves site
NATURAL GAS: Atmos Energy Corporation
Size Line: 4-inch line serves the site
ELECTRICITY: Kenergy Corporation; Owensboro Municipal Utilities
BROADBAND (Type:Service): Cable: Adelphia; DSL: BellSouth; Wireless: Owensboro Municipal Utilities
FLOOD DATA: Portions of site are within the 100-year flood plain
OWNERSHIP: Economic Development Properties, Inc.
SCHOOL DISTRICT: Daviess County Schools
PRICE PER ACRE: \$25,000