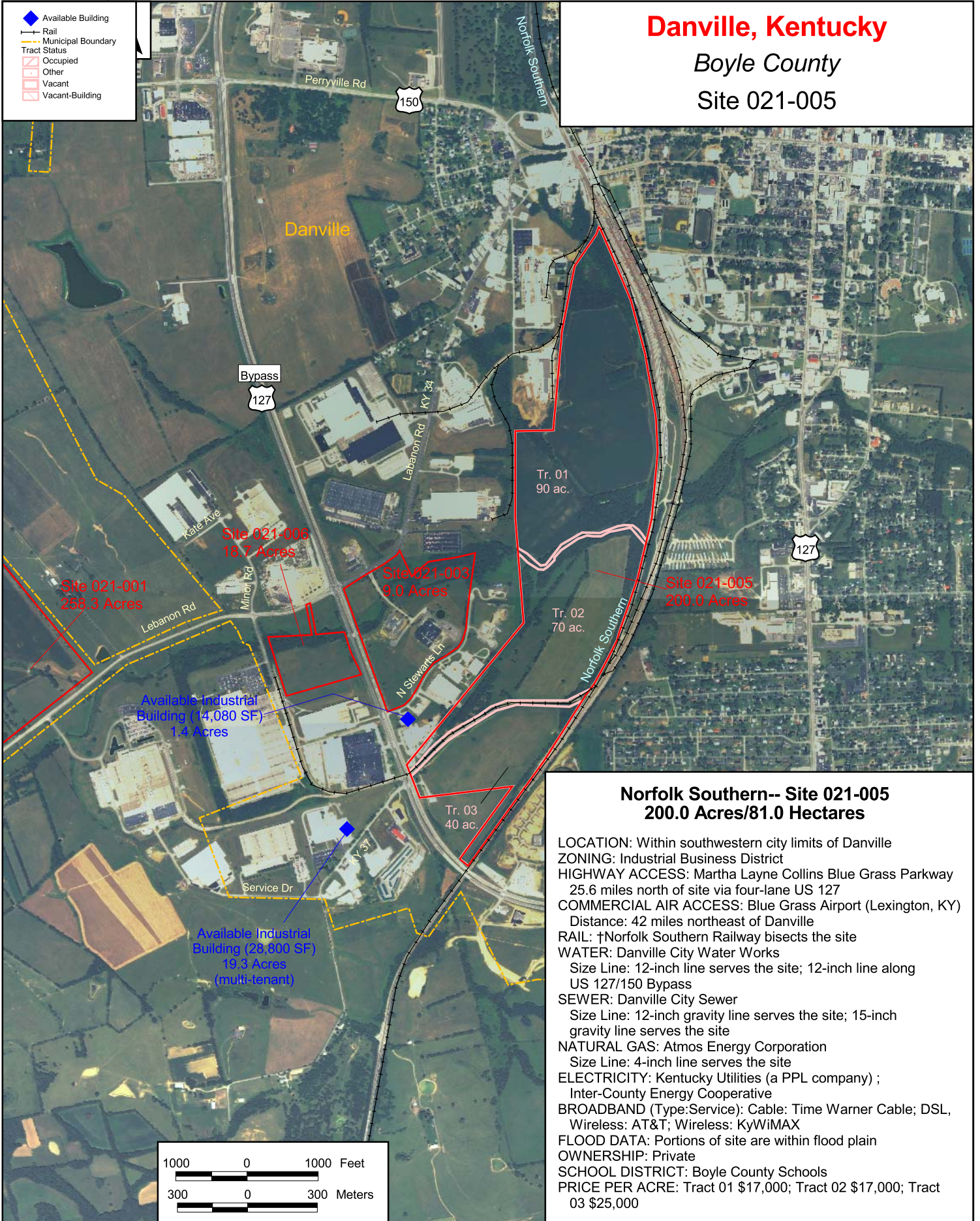


# Danville, Kentucky

Boyle County

Site 021-005



## Norfolk Southern-- Site 021-005 200.0 Acres/81.0 Hectares

**LOCATION:** Within southwestern city limits of Danville  
**ZONING:** Industrial Business District  
**HIGHWAY ACCESS:** Martha Layne Collins Blue Grass Parkway  
25.6 miles north of site via four-lane US 127  
**COMMERCIAL AIR ACCESS:** Blue Grass Airport (Lexington, KY)  
Distance: 42 miles northeast of Danville  
**RAIL:** †Norfolk Southern Railway bisects the site  
**WATER:** Danville City Water Works  
Size Line: 12-inch line serves the site; 12-inch line along  
US 127/150 Bypass  
**SEWER:** Danville City Sewer  
Size Line: 12-inch gravity line serves the site; 15-inch  
gravity line serves the site  
**NATURAL GAS:** Atmos Energy Corporation  
Size Line: 4-inch line serves the site  
**ELECTRICITY:** Kentucky Utilities (a PPL company) ;  
Inter-County Energy Cooperative  
**BROADBAND (Type:Service):** Cable: Time Warner Cable; DSL,  
Wireless: AT&T; Wireless: KyWiMAX  
**FLOOD DATA:** Portions of site are within flood plain  
**OWNERSHIP:** Private  
**SCHOOL DISTRICT:** Boyle County Schools  
**PRICE PER ACRE:** Tract 01 \$17,000; Tract 02 \$17,000; Tract  
03 \$25,000

For more information contact the Kentucky Cabinet for Economic Development, Department for Business Development  
Old Capitol Annex - 300 West Broadway - Frankfort, KY 40601 - Tel:(502)564-7140 - Fax:(502)564-3256 - <http://www.thinkkentucky.com>

Map Date: 04/22/2011  
Photo Date: Summer 2008

All information regarding property is from sources deemed reliable, but no warranty or representation is made by the Commonwealth of Kentucky or any of its agencies as to its accuracy. It is subject to errors, omissions, change of price, prior sale, lease, or withdrawal without our knowledge. Further, no warranty or representation is made as to the environmental suitability or condition of the property. Prospective purchasers and/or lessees should perform their own due diligence in determining the suitability of a property for their intended use.