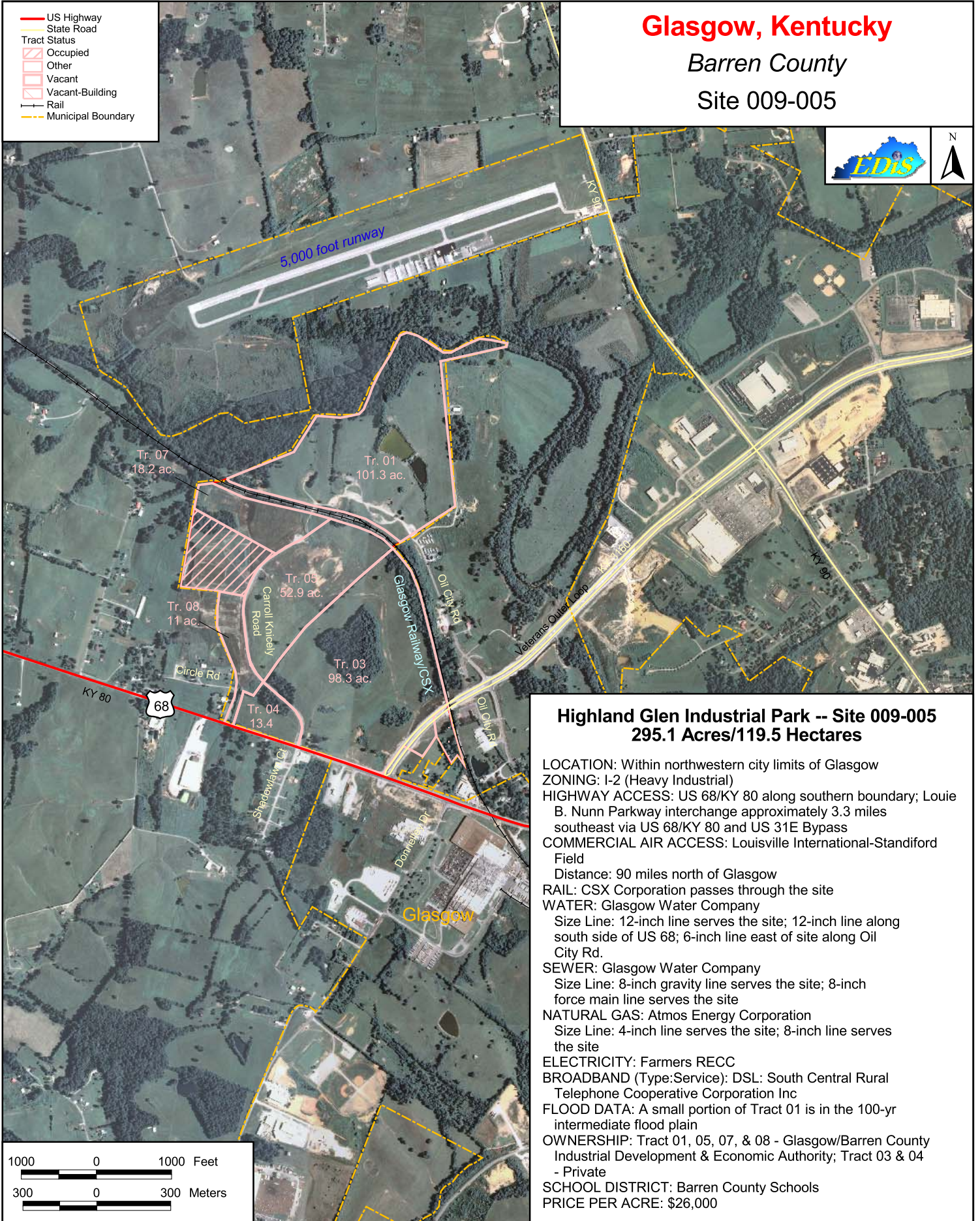


# Glasgow, Kentucky

Barren County

Site 009-005



## Highland Glen Industrial Park -- Site 009-005 295.1 Acres/119.5 Hectares

**LOCATION:** Within northwestern city limits of Glasgow  
**ZONING:** I-2 (Heavy Industrial)  
**HIGHWAY ACCESS:** US 68/KY 80 along southern boundary; Louie B. Nunn Parkway interchange approximately 3.3 miles southeast via US 68/KY 80 and US 31E Bypass  
**COMMERCIAL AIR ACCESS:** Louisville International-Standiford Field  
Distance: 90 miles north of Glasgow  
**RAIL:** CSX Corporation passes through the site  
**WATER:** Glasgow Water Company  
Size Line: 12-inch line serves the site; 12-inch line along south side of US 68; 6-inch line east of site along Oil City Rd.  
**SEWER:** Glasgow Water Company  
Size Line: 8-inch gravity line serves the site; 8-inch force main line serves the site  
**NATURAL GAS:** Atmos Energy Corporation  
Size Line: 4-inch line serves the site; 8-inch line serves the site  
**ELECTRICITY:** Farmers RECC  
**BROADBAND (Type:Service):** DSL: South Central Rural Telephone Cooperative Corporation Inc  
**FLOOD DATA:** A small portion of Tract 01 is in the 100-yr intermediate flood plain  
**OWNERSHIP:** Tract 01, 05, 07, & 08 - Glasgow/Barren County Industrial Development & Economic Authority; Tract 03 & 04 - Private  
**SCHOOL DISTRICT:** Barren County Schools  
**PRICE PER ACRE:** \$26,000