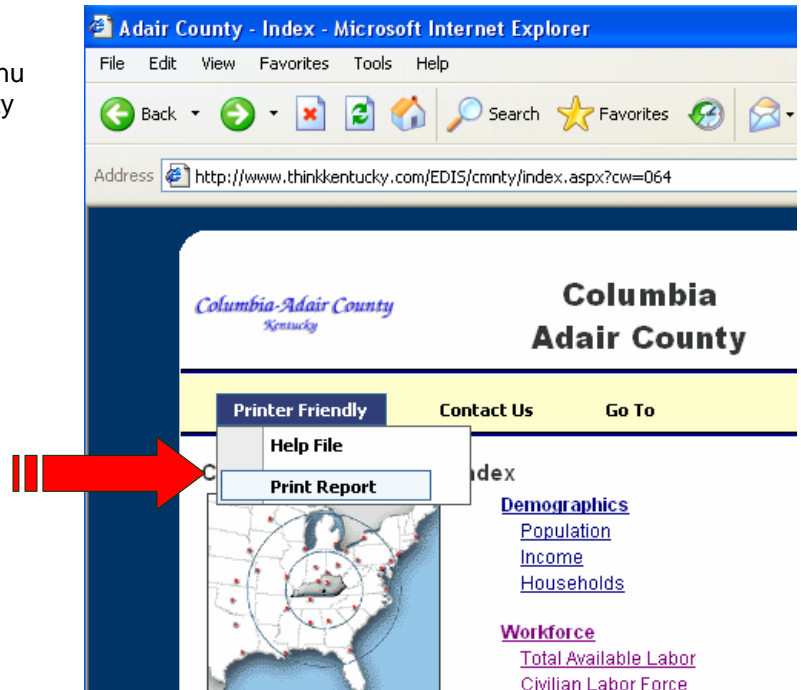


Instructions for printing the Printer Friendly Version of a Community Profile

Note: The printer friendly version is intended to be viewed with Internet Explorer 6 or higher or Firefox

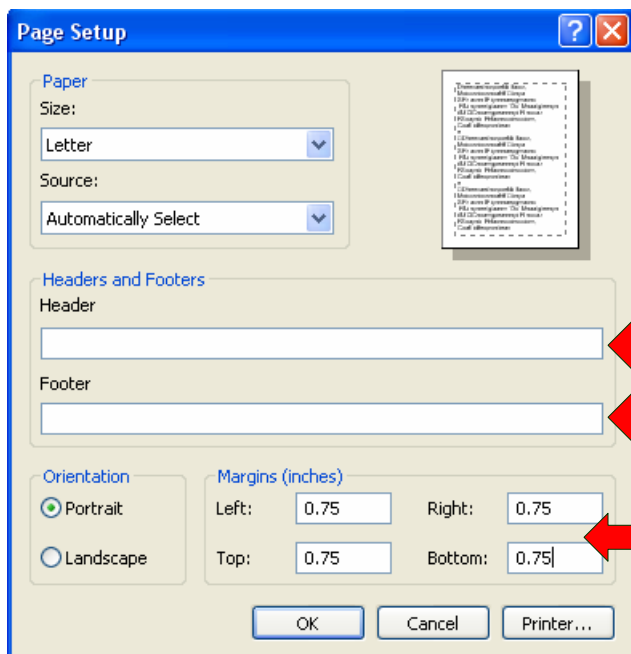
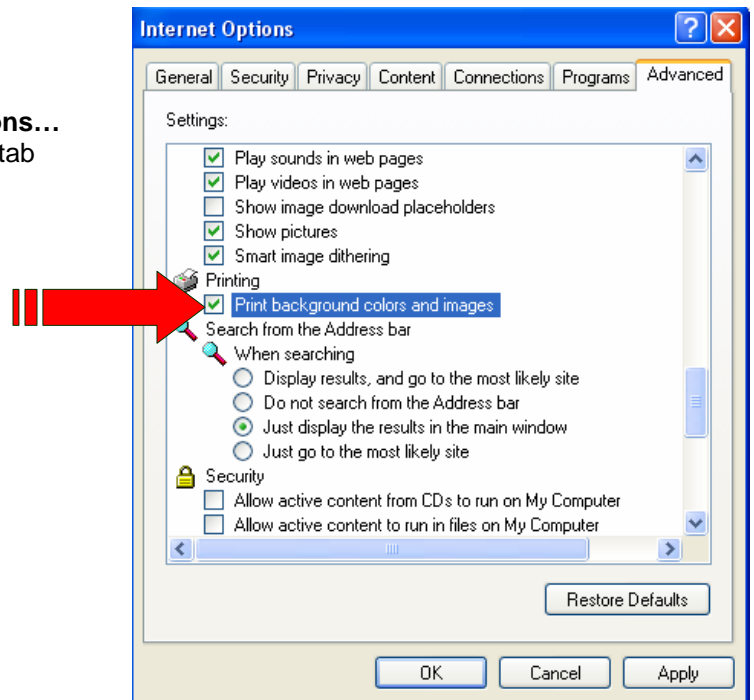
To view and print the printer friendly version of a community profile, click on the **Printer Friendly** menu near the top of any information page for a community and then click on **Print Report**.



Internet Explorer Printing Instructions

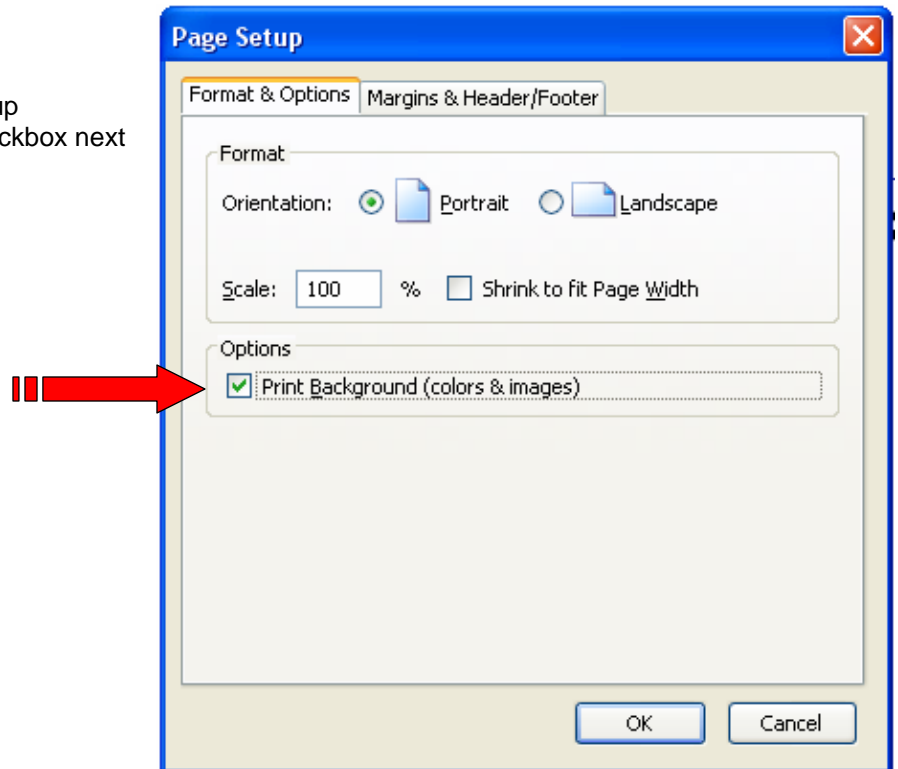
- Click on the **Tools** menu, then click on **Internet Options...**
- In the Internet Options dialog, click on the **Advanced** tab
- Scroll down to the Printing options and check **Print background colors and images**
- Click **OK**

- Next, click on the **File** menu and then **Page Setup**
- Clear any text in the Header and Footer section
- Set all margins to 0.75"
- Click **OK**

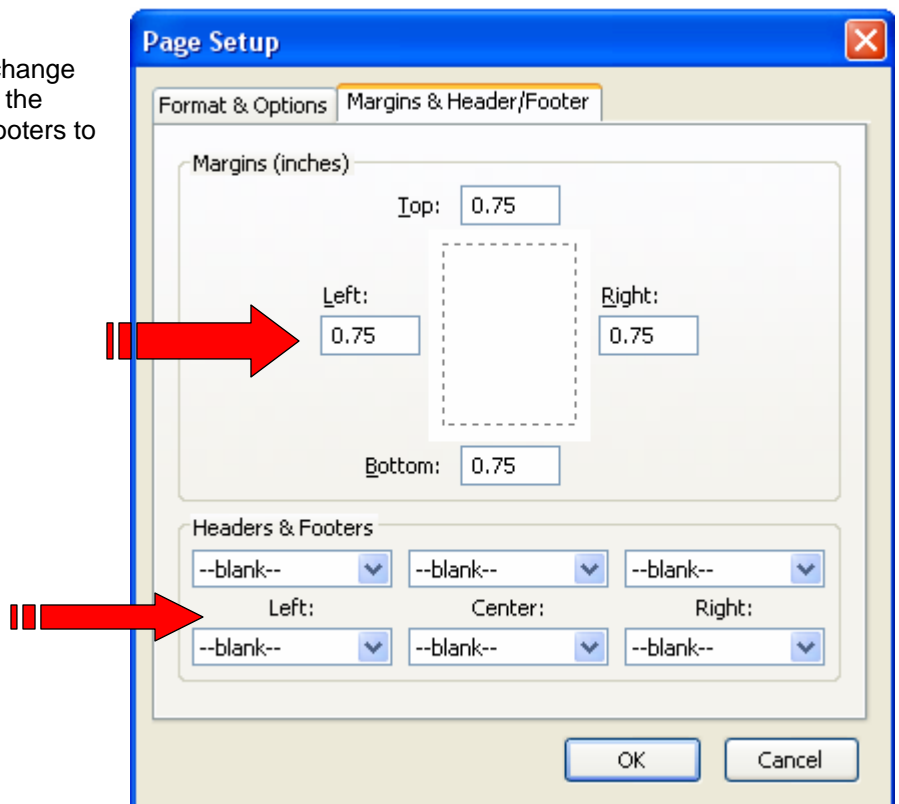


Firefox Printing Instructions

- Go to the File menu and select Page Setup
- In the Format & Options tab, click the checkbox next to **Print Background (colors & images)**



- In the Margins & Header/Footer tab, change all the margins to 0.75 and change all the dropdown menus under Headers & Footers to **--blank--**



If you need assistance, please contact:

Mary NeCamp

Kentucky Cabinet for Economic Development , Office of Research

Phone: 502-564-4886

Email: Mary.NeCamp@ky.gov