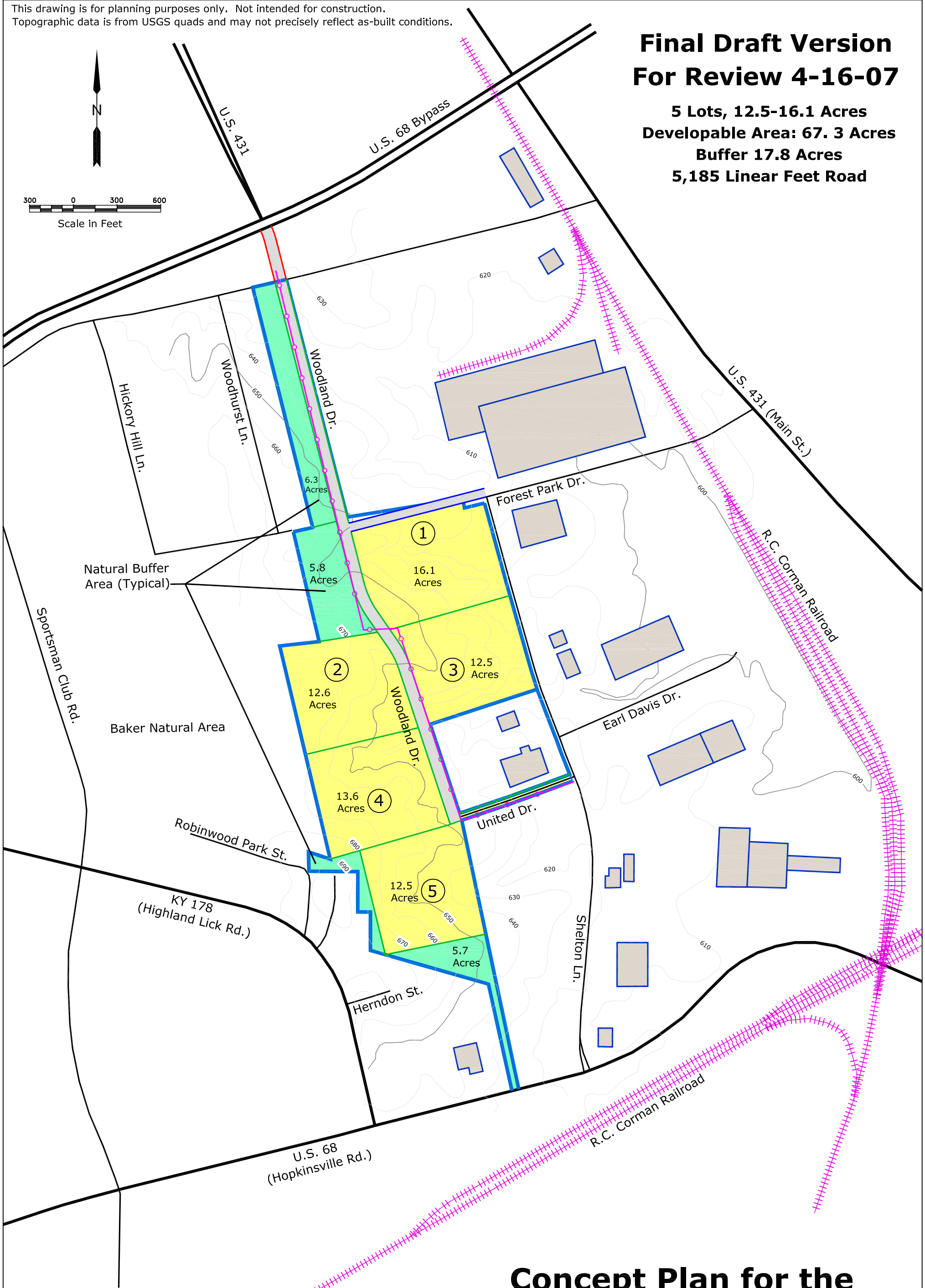
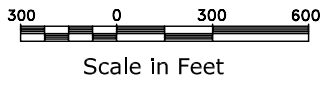
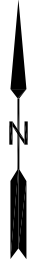


This drawing is for planning purposes only. Not intended for construction.
Topographic data is from USGS quads and may not precisely reflect as-built conditions.

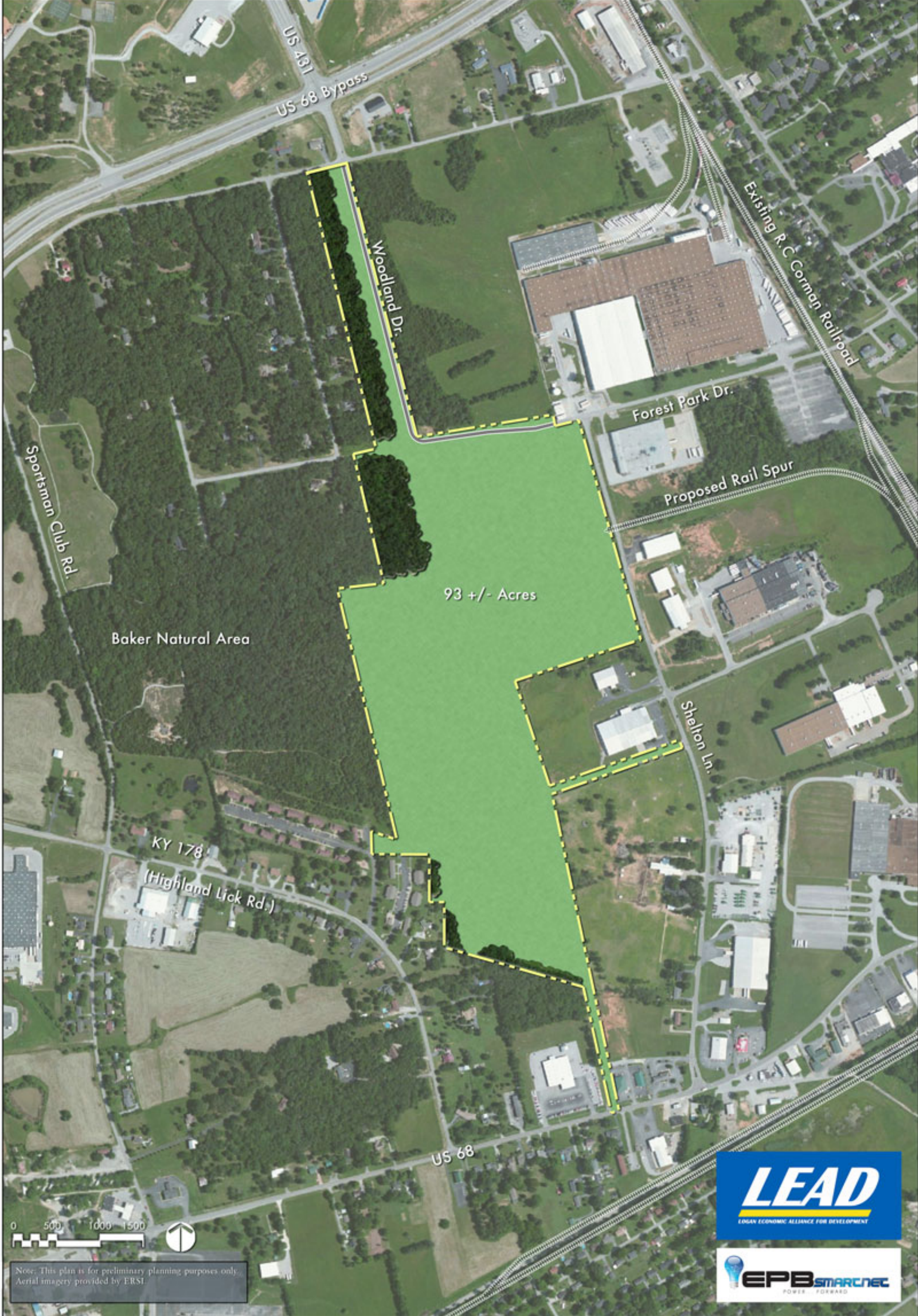
Final Draft Version For Review 4-16-07

5 Lots, 12.5-16.1 Acres
Developable Area: 67.3 Acres
Buffer 17.8 Acres
5,185 Linear Feet Road



Concept Plan for the Woodland Business Park Russellville, KY

April 2007



93 +/- Acres

Baker Natural Area

KY 178
(Highland Lick Rd.)



Note: This plan is for preliminary planning purposes only. Aerial imagery provided by ERSI.



PROJECT SLIP - SHELTON LANE INDUSTRIAL PARK PROPERTY EXHIBIT RUSSELLVILLE, LOGAN CO., KENTUCKY

CREATED IN SEPTEMBER, 2013 BY

