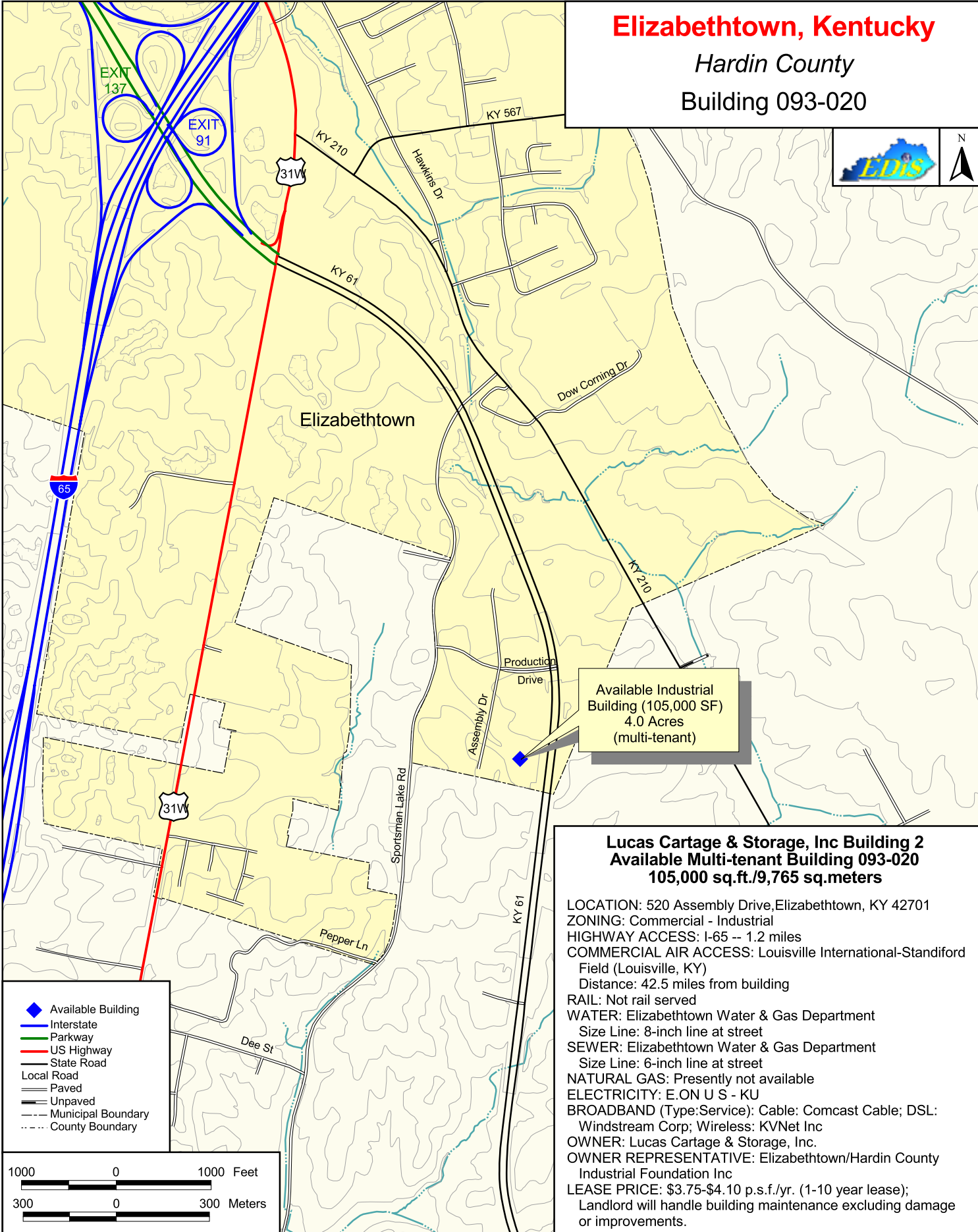


Elizabethtown, Kentucky
Hardin County
Building 093-020



Available Industrial Building (105,000 SF)
 4.0 Acres
 (multi-tenant)

Lucas Cartage & Storage, Inc Building 2
Available Multi-tenant Building 093-020
105,000 sq.ft./9,765 sq.meters

LOCATION: 520 Assembly Drive, Elizabethtown, KY 42701
 ZONING: Commercial - Industrial
 HIGHWAY ACCESS: I-65 -- 1.2 miles
 COMMERCIAL AIR ACCESS: Louisville International-Standiford Field (Louisville, KY)
 Distance: 42.5 miles from building
 RAIL: Not rail served
 WATER: Elizabethtown Water & Gas Department
 Size Line: 8-inch line at street
 SEWER: Elizabethtown Water & Gas Department
 Size Line: 6-inch line at street
 NATURAL GAS: Presently not available
 ELECTRICITY: E.ON U S - KU
 BROADBAND (Type:Service): Cable: Comcast Cable; DSL: Windstream Corp; Wireless: KVNet Inc
 OWNER: Lucas Cartage & Storage, Inc.
 OWNER REPRESENTATIVE: Elizabethtown/Hardin County Industrial Foundation Inc
 LEASE PRICE: \$3.75-\$4.10 p.s.f./yr. (1-10 year lease);
 Landlord will handle building maintenance excluding damage or improvements.

- ◆ Available Building
- Interstate
- Parkway
- US Highway
- State Road
- Local Road
- Paved
- Unpaved
- - - Municipal Boundary
- - - County Boundary

