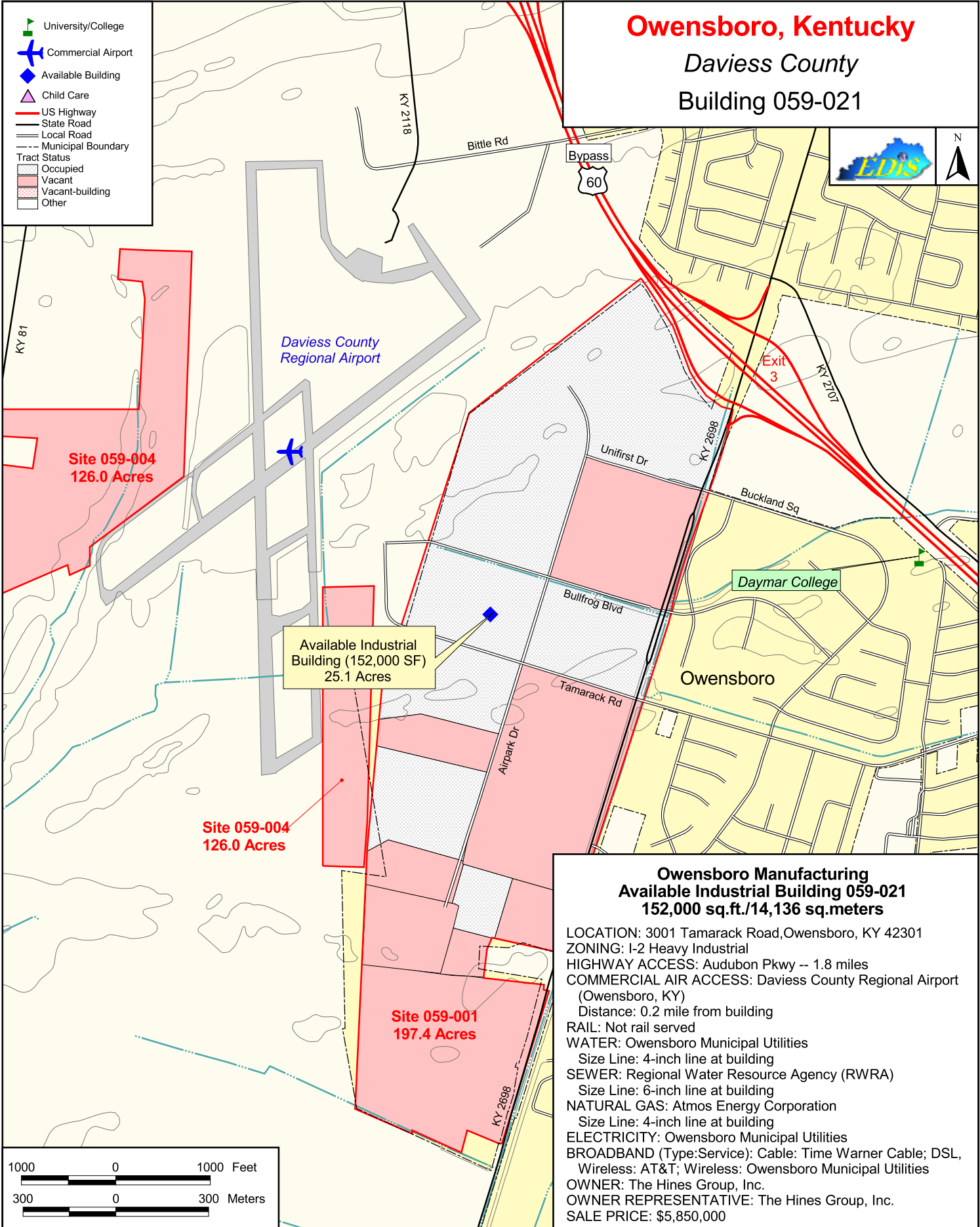


Owensboro, Kentucky

Daviess County

Building 059-021



Owensboro Manufacturing Available Industrial Building 059-021 152,000 sq.ft./14,136 sq.meters

LOCATION: 3001 Tamarack Road, Owensboro, KY 42301
ZONING: I-2 Heavy Industrial
HIGHWAY ACCESS: Audubon Pkwy -- 1.8 miles
COMMERCIAL AIR ACCESS: Daviess County Regional Airport (Owensboro, KY)
Distance: 0.2 mile from building
RAIL: Not rail served
WATER: Owensboro Municipal Utilities
Size Line: 4-inch line at building
SEWER: Regional Water Resource Agency (RWRA)
Size Line: 6-inch line at building
NATURAL GAS: Atmos Energy Corporation
Size Line: 4-inch line at building
ELECTRICITY: Owensboro Municipal Utilities
BROADBAND (Type:Service): Cable: Time Warner Cable; DSL, Wireless: AT&T; Wireless: Owensboro Municipal Utilities
OWNER: The Hines Group, Inc.
OWNER REPRESENTATIVE: The Hines Group, Inc.
SALE PRICE: \$5,850,000

