

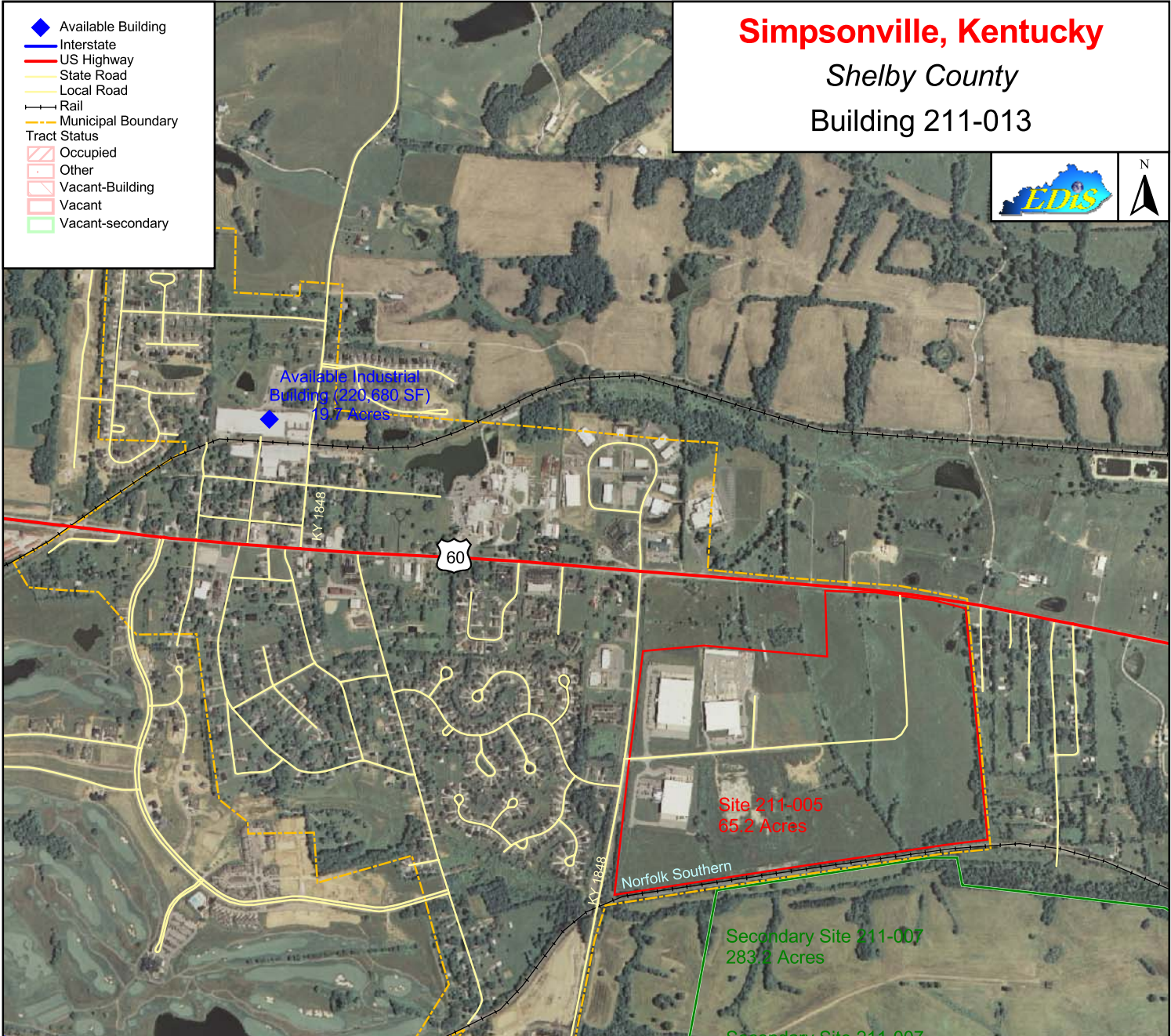
Simpsonville, Kentucky

Shelby County

Building 211-013



- ◆ Available Building
- Interstate
- US Highway
- State Road
- Local Road
- Rail
- Municipal Boundary
- Tract Status
- Occupied
- Other
- Vacant-Building
- Vacant
- Vacant-secondary



Leggett & Platt
Available Industrial Building 211-013
220,680 sq.ft./20,523 sq.meters

LOCATION: 211 Main Street, Simpsonville, KY 40067
 ZONING: I-Industrial; C-Commercial
 HIGHWAY ACCESS: I-64 -- 2 miles
 COMMERCIAL AIR ACCESS: Louisville International-Standiford Field (Louisville, KY)
 Distance: 20.0 miles from building
 RAIL: Not rail served
 WATER: West Shelby Water District
 Size Line: 2-inch line at building
 SEWER: Shelbyville Municipal Water and Sewer Commission
 Size Line: 6-inch line at building
 NATURAL GAS: E.ON U S - LG&E
 Size Line: 2-inch line at building
 ELECTRICITY: E.ON U S - KU
 BROADBAND (Type:Service): Cable: Insight Communications
 OWNER: Leggett & Platt, Incorporated
 OWNER REPRESENTATIVE: Colliers Harry K. Moore
 SALE PRICE: \$1,850,000; Cash at closing

