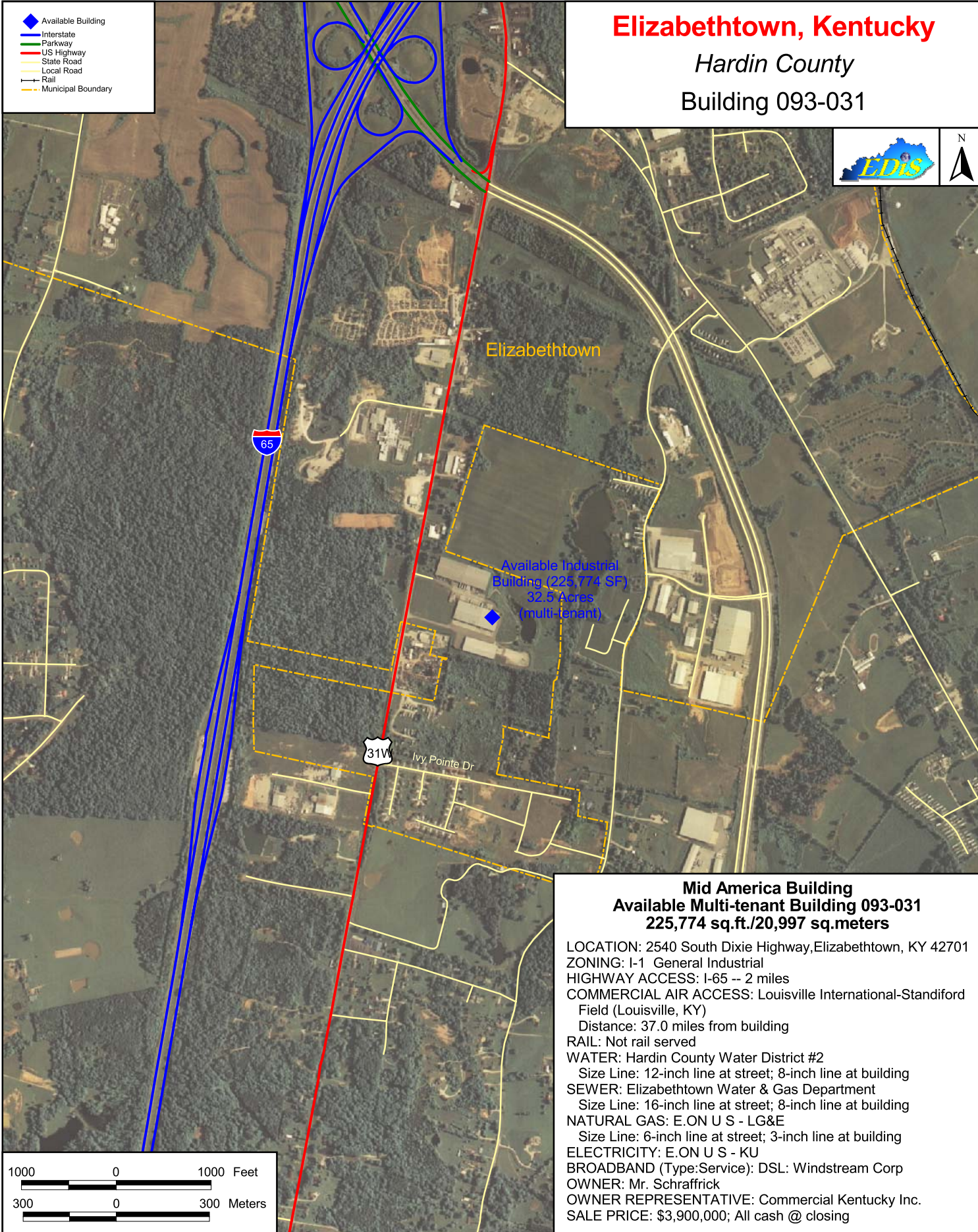


Elizabethtown, Kentucky

Hardin County

Building 093-031



Elizabethtown

Available Industrial Building (225,774 SF)
32.5 Acres (multi-tenant)

31W

Ivy Pointe Dr

Mid America Building Available Multi-tenant Building 093-031 225,774 sq.ft./20,997 sq.meters

LOCATION: 2540 South Dixie Highway, Elizabethtown, KY 42701
ZONING: I-1 General Industrial
HIGHWAY ACCESS: I-65 -- 2 miles
COMMERCIAL AIR ACCESS: Louisville International-Standiford Field (Louisville, KY)
Distance: 37.0 miles from building
RAIL: Not rail served
WATER: Hardin County Water District #2
Size Line: 12-inch line at street; 8-inch line at building
SEWER: Elizabethtown Water & Gas Department
Size Line: 16-inch line at street; 8-inch line at building
NATURAL GAS: E.ON U S - LG&E
Size Line: 6-inch line at street; 3-inch line at building
ELECTRICITY: E.ON U S - KU
BROADBAND (Type:Service): DSL: Windstream Corp
OWNER: Mr. Schraffrick
OWNER REPRESENTATIVE: Commercial Kentucky Inc.
SALE PRICE: \$3,900,000; All cash @ closing



For more information contact the Kentucky Cabinet for Economic Development, Department for Business Development
Old Capitol Annex - 300 West Broadway - Frankfort, KY 40601 - Tel: (502) 564-7140 - Fax: (502) 564-3256 - <http://www.thinkkentucky.com>
All information regarding property is from sources deemed reliable, but no warranty or representation is made by the Commonwealth of Kentucky or any of its agencies as to its accuracy. It is subject to errors, omissions, change of price, prior sale, lease, or withdrawal without our knowledge. Further, no warranty or representation is made as to the environmental suitability or condition of the property. Prospective purchasers and/or lessees should perform their own due diligence in determining the suitability of a property for their intended use.