
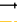




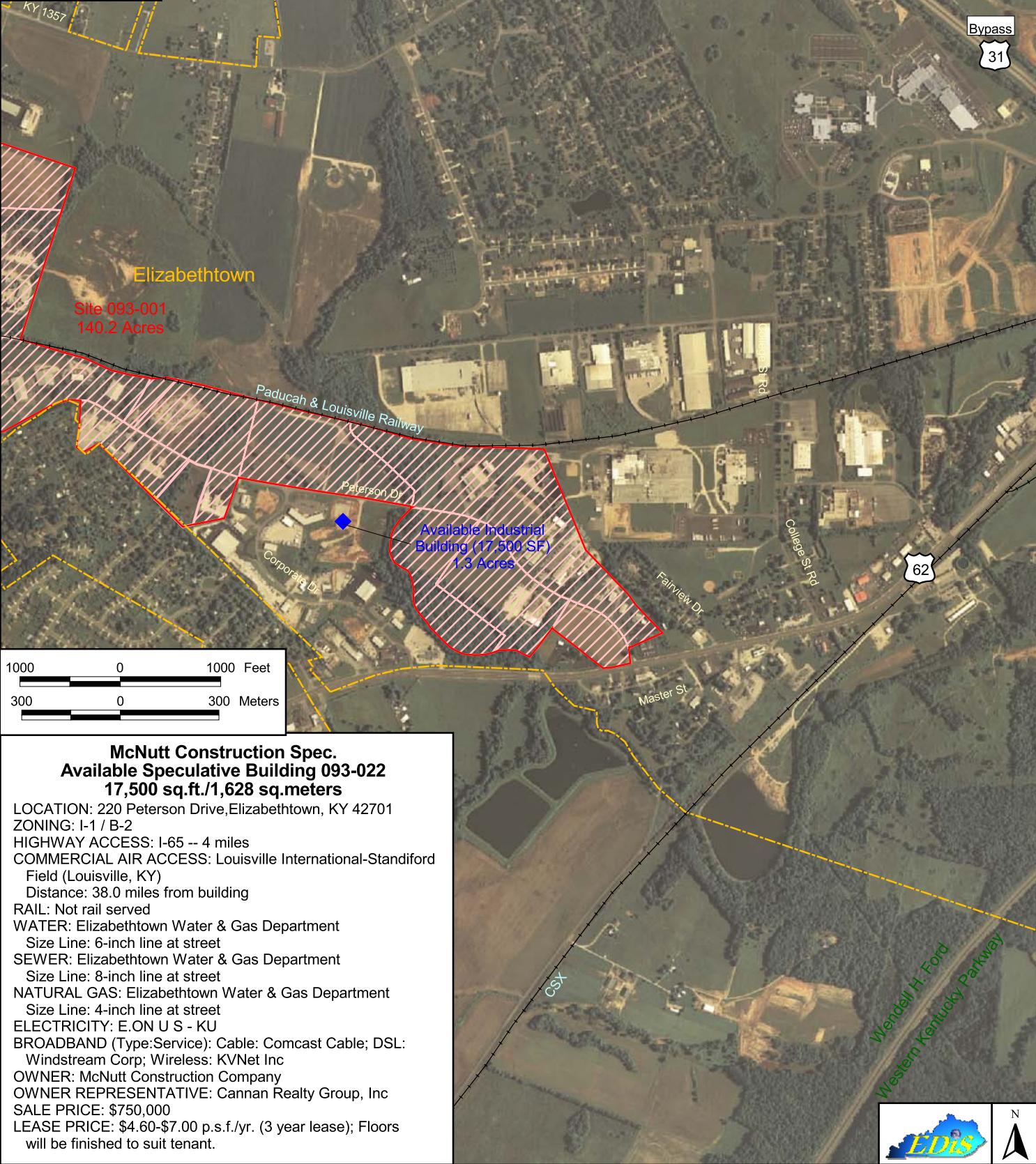


Elizabethtown, Kentucky

Hardin County

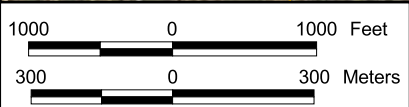
Building 093-022

-  Available Building
-  Rail
-  Municipal Boundary
-  Occupied
-  Other
-  Vacant
-  Vacant-Building



Site 093-001
140.2 Acres

Available Industrial
Building (17,500 SF)
1.3 Acres



**McNutt Construction Spec.
Available Speculative Building 093-022
17,500 sq.ft./1,628 sq.meters**

LOCATION: 220 Peterson Drive, Elizabethtown, KY 42701
 ZONING: I-1 / B-2
 HIGHWAY ACCESS: I-65 -- 4 miles
 COMMERCIAL AIR ACCESS: Louisville International-Standiford Field (Louisville, KY)
 Distance: 38.0 miles from building
 RAIL: Not rail served
 WATER: Elizabethtown Water & Gas Department
 Size Line: 6-inch line at street
 SEWER: Elizabethtown Water & Gas Department
 Size Line: 8-inch line at street
 NATURAL GAS: Elizabethtown Water & Gas Department
 Size Line: 4-inch line at street
 ELECTRICITY: E.ON U S - KU
 BROADBAND (Type:Service): Cable: Comcast Cable; DSL: Windstream Corp; Wireless: KVNet Inc
 OWNER: McNutt Construction Company
 OWNER REPRESENTATIVE: Cannan Realty Group, Inc
 SALE PRICE: \$750,000
 LEASE PRICE: \$4.60-\$7.00 p.s.f./yr. (3 year lease); Floors will be finished to suit tenant.

