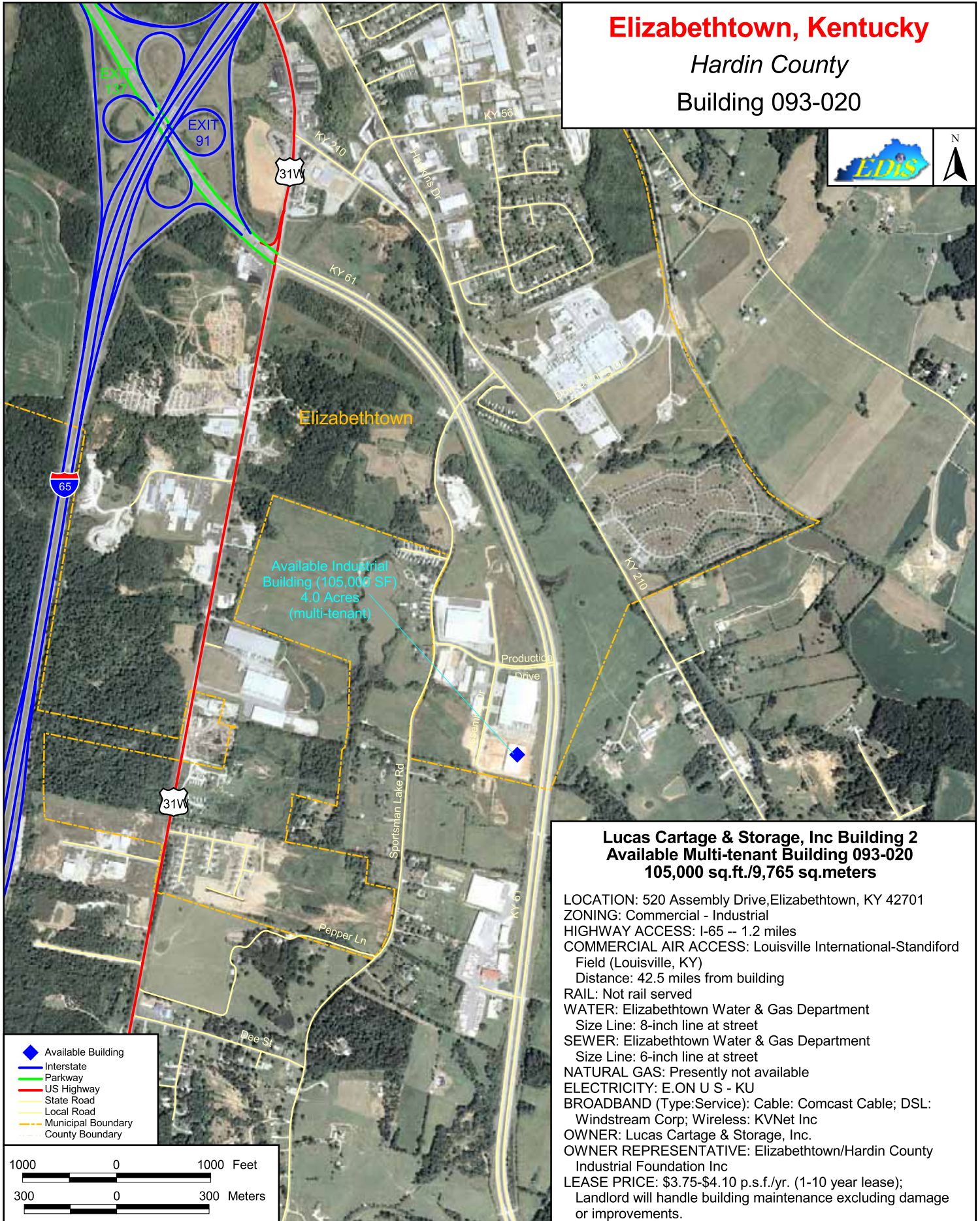


# Elizabethtown, Kentucky

Hardin County

Building 093-020



**Lucas Cartage & Storage, Inc Building 2  
Available Multi-tenant Building 093-020  
105,000 sq.ft./9,765 sq.meters**

LOCATION: 520 Assembly Drive, Elizabethtown, KY 42701  
ZONING: Commercial - Industrial  
HIGHWAY ACCESS: I-65 -- 1.2 miles  
COMMERCIAL AIR ACCESS: Louisville International-Standiford Field (Louisville, KY)  
Distance: 42.5 miles from building  
RAIL: Not rail served  
WATER: Elizabethtown Water & Gas Department  
Size Line: 8-inch line at street  
SEWER: Elizabethtown Water & Gas Department  
Size Line: 6-inch line at street  
NATURAL GAS: Presently not available  
ELECTRICITY: E.ON U S - KU  
BROADBAND (Type:Service): Cable: Comcast Cable; DSL: Windstream Corp; Wireless: KVNet Inc  
OWNER: Lucas Cartage & Storage, Inc.  
OWNER REPRESENTATIVE: Elizabethtown/Hardin County Industrial Foundation Inc  
LEASE PRICE: \$3.75-\$4.10 p.s.f./yr. (1-10 year lease);  
Landlord will handle building maintenance excluding damage or improvements.

- ◆ Available Building
- ◆ Interstate
- ◆ Parkway
- ◆ US Highway
- ◆ State Road
- ◆ Local Road
- ◆ Municipal Boundary
- ◆ County Boundary

