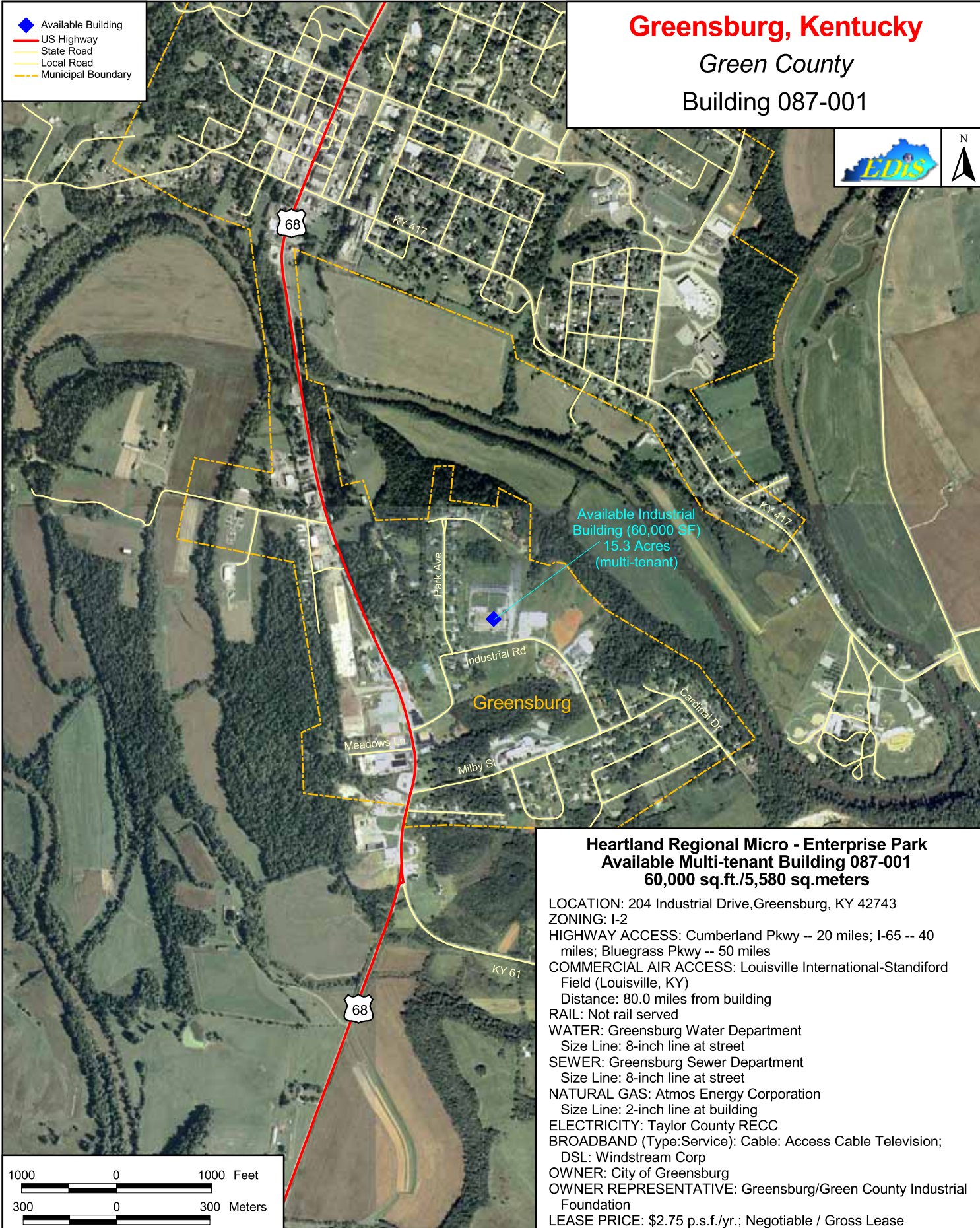


Greensburg, Kentucky

Green County

Building 087-001



Heartland Regional Micro - Enterprise Park Available Multi-tenant Building 087-001 60,000 sq.ft./5,580 sq.meters

LOCATION: 204 Industrial Drive, Greensburg, KY 42743
ZONING: I-2
HIGHWAY ACCESS: Cumberland Pkwy -- 20 miles; I-65 -- 40 miles; Bluegrass Pkwy -- 50 miles
COMMERCIAL AIR ACCESS: Louisville International-Standford Field (Louisville, KY)
Distance: 80.0 miles from building
RAIL: Not rail served
WATER: Greensburg Water Department
Size Line: 8-inch line at street
SEWER: Greensburg Sewer Department
Size Line: 8-inch line at street
NATURAL GAS: Atmos Energy Corporation
Size Line: 2-inch line at building
ELECTRICITY: Taylor County RECC
BROADBAND (Type:Service): Cable: Access Cable Television;
DSL: Windstream Corp
OWNER: City of Greensburg
OWNER REPRESENTATIVE: Greensburg/Green County Industrial Foundation
LEASE PRICE: \$2.75 p.s.f./yr.; Negotiable / Gross Lease

