

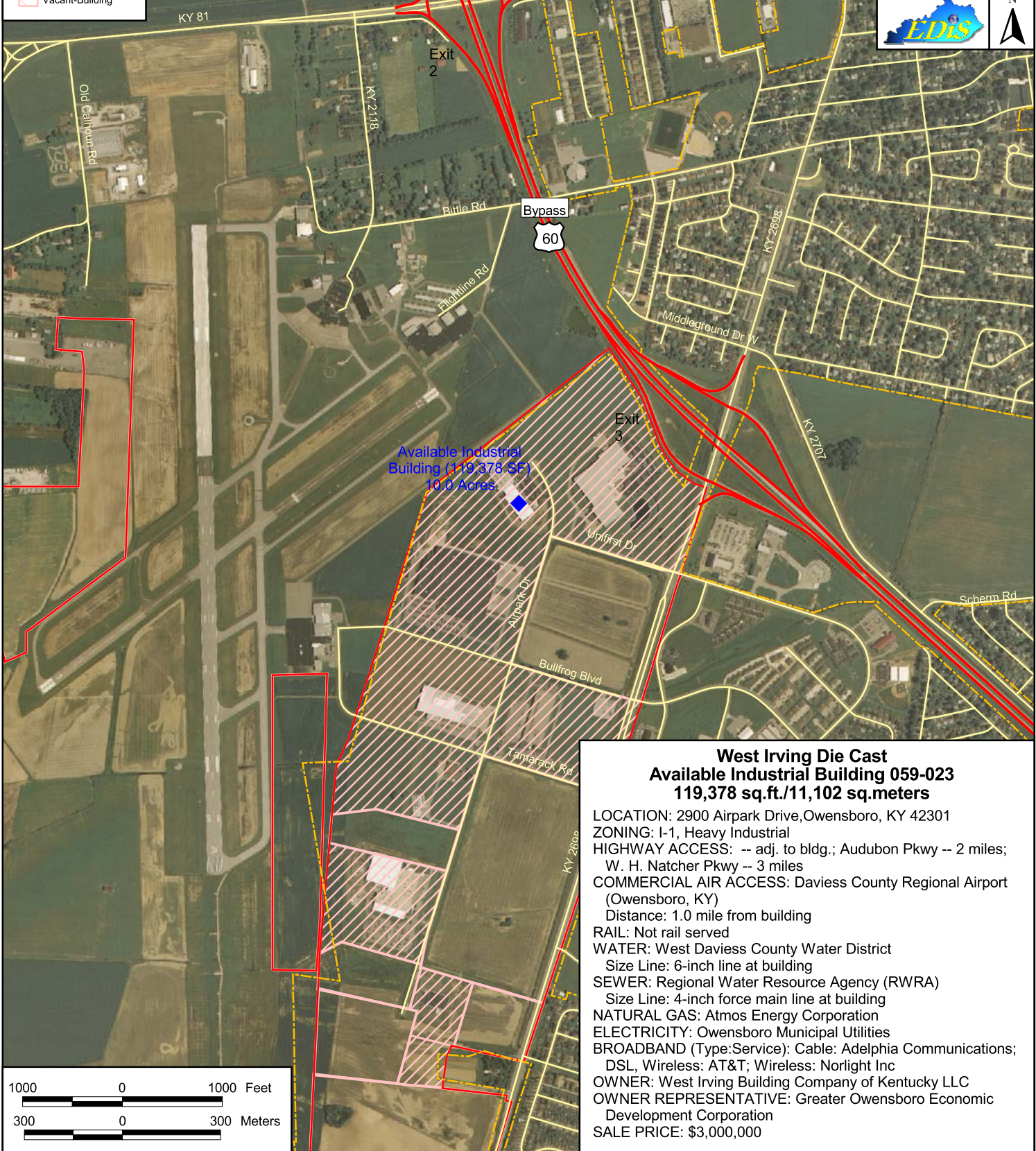
Owensboro, Kentucky

Daviess County

Building 059-023



- ◆ Available Building
- Parkway
- US Highway
- State Road
- Local Road
- Municipal Boundary
- Tract Status
 - Occupied
 - Other
 - Vacant
 - Vacant-Building



Available Industrial Building (119,378 SF)
10.0 Acres

West Irving Die Cast Available Industrial Building 059-023 119,378 sq.ft./11,102 sq.meters

LOCATION: 2900 Airpark Drive, Owensboro, KY 42301
ZONING: I-1, Heavy Industrial
HIGHWAY ACCESS: -- adj. to bldg.; Audubon Pkwy -- 2 miles;
W. H. Natcher Pkwy -- 3 miles
COMMERCIAL AIR ACCESS: Daviess County Regional Airport
(Owensboro, KY)
Distance: 1.0 mile from building
RAIL: Not rail served
WATER: West Daviess County Water District
Size Line: 6-inch line at building
SEWER: Regional Water Resource Agency (RWRA)
Size Line: 4-inch force main line at building
NATURAL GAS: Atmos Energy Corporation
ELECTRICITY: Owensboro Municipal Utilities
BROADBAND (Type:Service): Cable: Adelphia Communications;
DSL, Wireless: AT&T; Wireless: Norlight Inc
OWNER: West Irving Building Company of Kentucky LLC
OWNER REPRESENTATIVE: Greater Owensboro Economic
Development Corporation
SALE PRICE: \$3,000,000