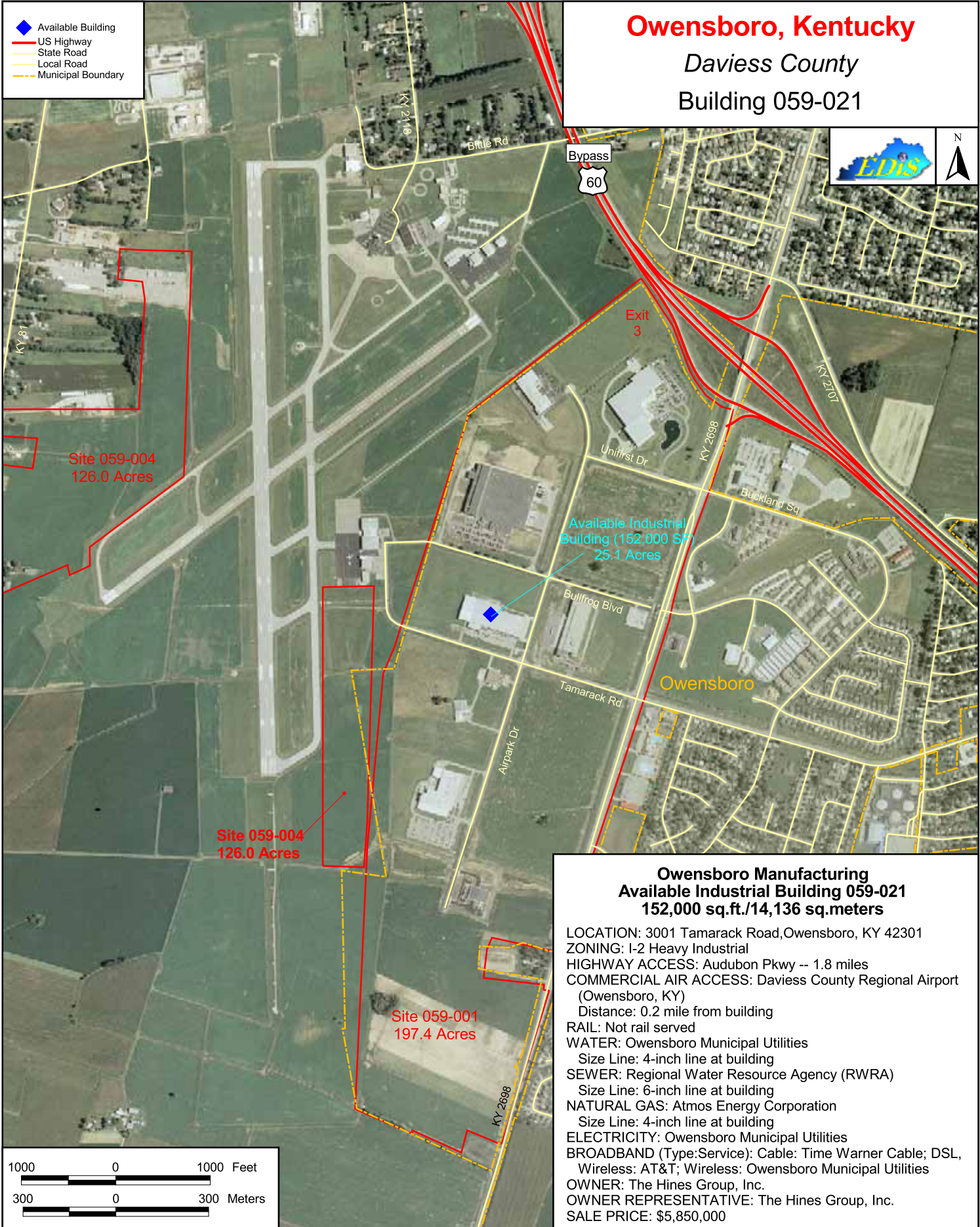


Owensboro, Kentucky

Daviess County

Building 059-021



Owensboro Manufacturing Available Industrial Building 059-021 152,000 sq.ft./14,136 sq.meters

LOCATION: 3001 Tamarack Road, Owensboro, KY 42301
ZONING: I-2 Heavy Industrial
HIGHWAY ACCESS: Audubon Pkwy -- 1.8 miles
COMMERCIAL AIR ACCESS: Daviess County Regional Airport (Owensboro, KY)
Distance: 0.2 mile from building
RAIL: Not rail served
WATER: Owensboro Municipal Utilities
Size Line: 4-inch line at building
SEWER: Regional Water Resource Agency (RWRA)
Size Line: 6-inch line at building
NATURAL GAS: Atmos Energy Corporation
Size Line: 4-inch line at building
ELECTRICITY: Owensboro Municipal Utilities
BROADBAND (Type:Service): Cable: Time Warner Cable; DSL, Wireless: AT&T; Wireless: Owensboro Municipal Utilities
OWNER: The Hines Group, Inc.
OWNER REPRESENTATIVE: The Hines Group, Inc.
SALE PRICE: \$5,850,000

For more information contact the Kentucky Cabinet for Economic Development, Department for New Business Development
Old Capitol Annex - 300 West Broadway - Frankfort, KY 40601 - Tel: (502) 564-7140 - Fax: (502) 564-3256 - <http://www.thinkkentucky.com>

Map Date: 05/30/2008
Photo Date: 8/6/2004

All information regarding property is from sources deemed reliable, but no warranty or representation is made by the Commonwealth of Kentucky or any of its agencies as to its accuracy. It is subject to errors, omissions, change of price, prior sale, lease, or withdrawal without our knowledge. Further, no warranty or representation is made as to the environmental suitability or condition of the property. Prospective purchasers and/or lessees should perform their own due diligence in determining the suitability of a property for their intended use.