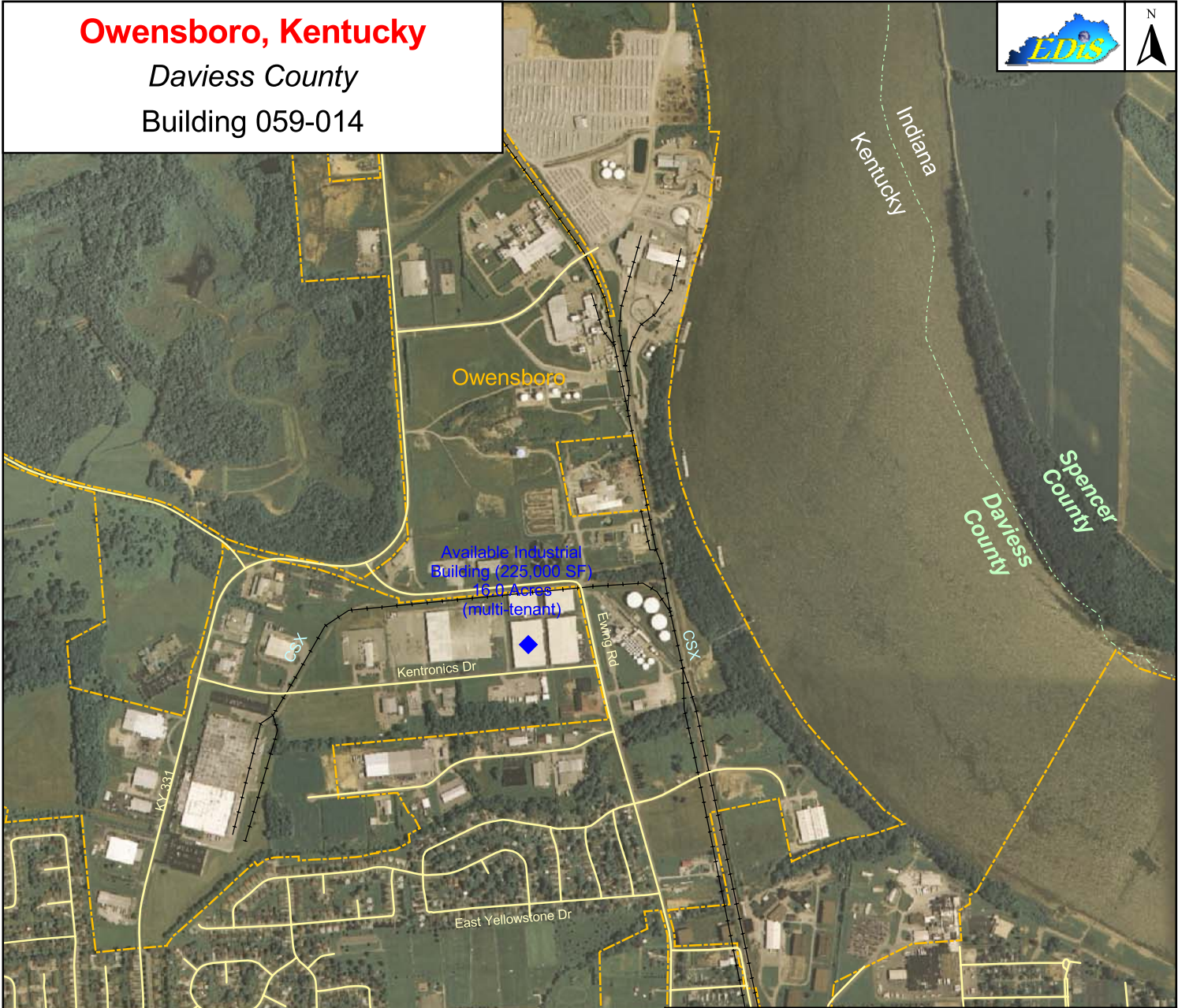


Owensboro, Kentucky

Daviess County

Building 059-014



Marks Building Available Multi-tenant Building 059-014 225,000 sq.ft./20,925 sq.meters

LOCATION: 2727 Kentronic Drive, Owensboro, KY 42301
ZONING: Not zoned
HIGHWAY ACCESS: Audubon Pkwy -- 2 miles
COMMERCIAL AIR ACCESS: Daviess County Regional Airport (Owensboro, KY)
Distance: 4.0 miles from building
RAIL: Not rail served
WATER: Owensboro Municipal Utilities
Size Line: 12-inch line at street
SEWER: Regional Water Resource Agency (RWRA)
Size Line: 6-inch line at building
NATURAL GAS: Atmos Energy Corporation
Size Line: 4-inch line at street
ELECTRICITY: Owensboro Municipal Utilities
BROADBAND (Type:Service): Cable: Time Warner Cable; DSL, Wireless: AT&T; Wireless: Norlight Inc
OWNER: Marks Co., Inc.
OWNER REPRESENTATIVE: Greater Owensboro Economic Development Corporation
LEASE PRICE: \$3.60 p.s.f./yr.; Triple Net - negotiable

For more information contact the Kentucky Cabinet for Economic Development, Department for Business Development
Old Capitol Annex - 300 West Broadway - Frankfort, KY 40601 - Tel: (502) 564-7140 - Fax: (502) 564-3256 - <http://www.thinkkentucky.com>

Map Date: 04/02/2009
Contour Interval: 10 feet

All information regarding property is from sources deemed reliable, but no warranty or representation is made by the Commonwealth of Kentucky or any of its agencies as to its accuracy. It is subject to errors, omissions, change of price, prior sale, lease, or withdrawal without our knowledge. Further, no warranty or representation is made as to the environmental suitability or condition of the property. Prospective purchasers and/or lessees should perform their own due diligence in determining the suitability of a property for their intended use.