

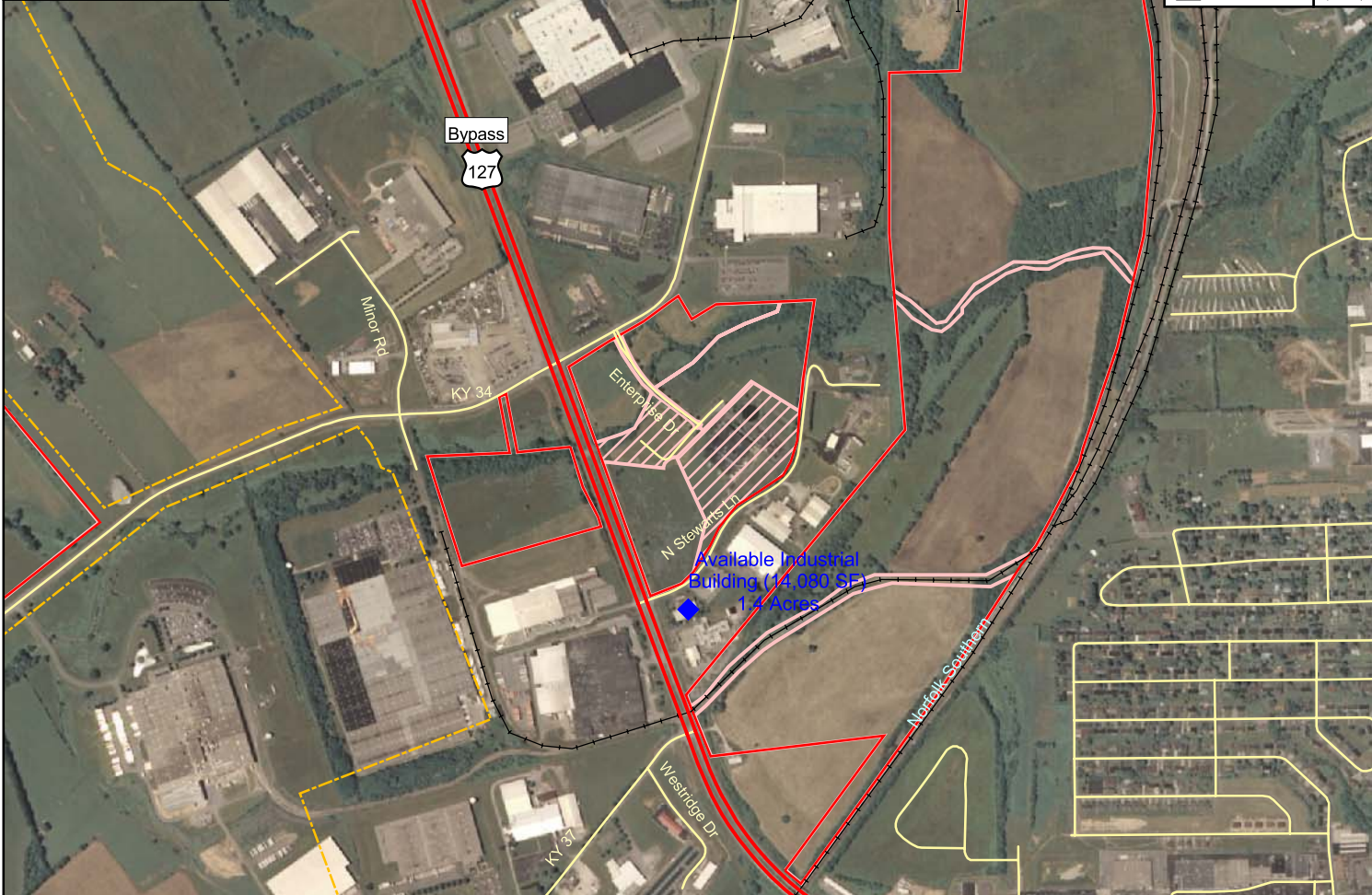
# Danville, Kentucky

Boyle County

Building 021-015

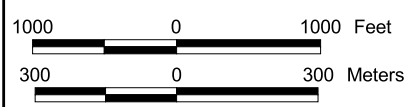


- ◆ Available Building
- US Highway
- State Road
- Local Road
- Rail
- Municipal Boundary
- County Boundary
- Tract Status
  - Occupied
  - Other
  - Vacant
  - Vacant-Building



### Hill Tool & Die Available Industrial Building 021-015 14,080 sq.ft./1,309 sq.meters

LOCATION: 70 North Stewarts Lane, Danville, KY 40422  
ZONING: Industrial Business Development (IBD)  
HIGHWAY ACCESS: Bluegrass Pkwy -- 26 miles; I-64 -- 49 miles; I-75 -- 37 miles  
COMMERCIAL AIR ACCESS: Blue Grass Airport (Lexington, KY)  
Distance: 45.0 miles from building  
RAIL: Not rail served  
WATER: Danville City Water Works  
Size Line: 10-inch line at building  
SEWER: Danville City Sewer  
Size Line: 8-inch line at building  
NATURAL GAS: Atmos Energy Corporation  
Size Line: 4-inch line at building  
ELECTRICITY: E.ON U S - KU  
BROADBAND (Type:Service): Cable: Time Warner Cable; DSL, Wireless: AT&T; Wireless: KyWiMAX  
OWNER: Hill Engineering, Inc. (Mestek, Inc.)  
OWNER REPRESENTATIVE: NAI Isaac Commercial Properties, Inc.  
SALE PRICE: \$480,000  
LEASE PRICE: \$3.75 p.s.f./yr. (1 year lease); Triple net lease; negotiable release.



For more information contact the Kentucky Cabinet for Economic Development, Department for Business Development  
Old Capitol Annex - 300 West Broadway - Frankfort, KY 40601 - Tel: (502) 564-7140 - Fax: (502) 564-3256 - <http://www.thinkkentucky.com>

Map Date: 04/20/2009  
Photo Date: 7/27/2006

All information regarding property is from sources deemed reliable, but no warranty or representation is made by the Commonwealth of Kentucky or any of its agencies as to its accuracy. It is subject to errors, omissions, change of price, prior sale, lease, or withdrawal without our knowledge. Further, no warranty or representation is made as to the environmental suitability or condition of the property. Prospective purchasers and/or lessees should perform their own due diligence in determining the suitability of a property for their intended use.